

Recombinant Human PAPP A Protein, His-tagged

Cat. No. PAPP A-2545H Lot. No. (See product label)

SPECIFICATION

Product Overview	Recombinant Human PAPP A Protein (Ala244-Leu501) with a N-His tag was expressed in E. coli.
Species	Human
Source	E.coli
Protein Length	Ala244-Leu501
Description	This gene encodes a secreted metalloproteinase which cleaves insulin-like growth factor binding proteins (IGFBPs). Following IGFBP cleavage, insulin growth factors dissociate from IGFBPs and bind to IGF receptors, resulting in activation of the IGF pathway. The encoded protein plays a role in bone formation, inflammation, wound healing and female fertility. Enhanced expression of this protein is associated with diabetic nephropathy in human patients and this protein may promote tumor invasion and growth in various human cancers.
Form	Freeze-dried powder
Molecular Mass	Predicted Molecular Mass: 30.9 kDa Accurate Molecular Mass: 37 kDa
Endotoxin	<1.0 EU per 1g (determined by the LAL method).
Purity	> 97%

 Tel: 1-631-559-9269 1-516-512-3133

 Email: info@creative-biomart.com  Fax: 1-631-938-8127

 45-1 Ramsey Road, Shirley, NY 11967, USA

Applications	Cell culture; Activity Assays.
Stability	The thermal stability is described by the loss rate. The loss rate was determined by accelerated thermal degradation test, that is, incubate the protein at 37 centigrade for 48h, and no obvious degradation and precipitation were observed. The loss rate is less than 5% within the expiration date under appropriate storage condition.
Storage	Avoid repeated freeze/thaw cycles. Store at 2-8 centigrade for one month. Aliquot and store at -80 centigrade for 12 months.
Storage Buffer	20mM Tris, 150mM NaCl, pH8.0, containing 1mM EDTA, 1mM DTT, 0.01% SKL, 5% Trehalose and Proclin300.
Reconstitution	Reconstitute in 20mM Tris, 150mM NaCl (pH8.0) to a concentration of 0.1-1.0 mg/mL. Do not vortex.

GENE INFORMATION

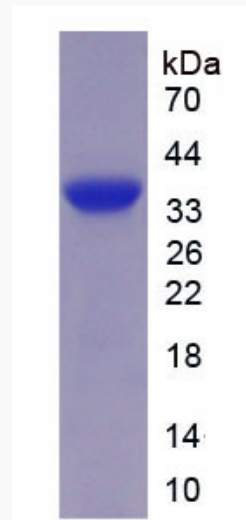
Gene Name	PAPPA pregnancy-associated plasma protein A, pappalysin 1 [Homo sapiens (human)]
Official Symbol	PAPPA
Synonyms	PAPPA; pregnancy-associated plasma protein A, pappalysin 1; pappalysin-1; ASBABP2; aspecific BCL2 ARE binding protein 2; differentially placenta 1 expressed protein; DIPLA1; IGFBP 4ase; insulin like growth factor dependent IGF binding protein 4 protease; PAPA; PAPP A; PAPPA1; IGF-dependent IGFBP-4 protease; aspecific BCL2 ARE-binding protein 2; pregnancy-associated plasma protein A; insulin-like growth factor-dependent IGF binding protein-4 protease; insulin-like growth factor-dependent IGF-binding protein 4 protease; PAPP-A; IGFBP-4ase;

 Tel: 1-631-559-9269 1-516-512-3133

 Email: info@creative-biomart.com  Fax: 1-631-938-8127

 45-1 Ramsey Road, Shirley, NY 11967, USA

Gene ID	5069
mRNA Refseq	NM_002581
Protein Refseq	NP_002572
MIM	176385
UniProt ID	Q13219

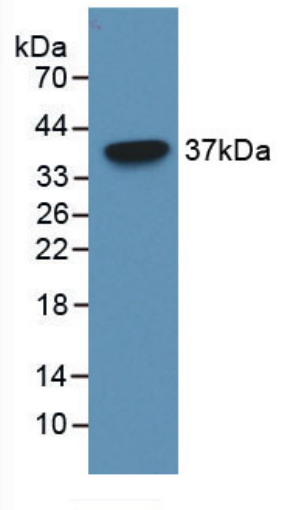


Tel: 1-631-559-9269 1-516-512-3133

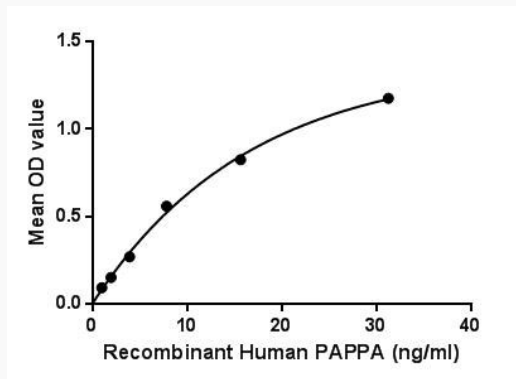
Email: info@creative-biomart.com Fax: 1-631-938-8127

45-1 Ramsey Road, Shirley, NY 11967, USA


WB




Bioactivity



Binding activity

 Tel: 1-631-559-9269 1-516-512-3133

 Email: info@creative-biomart.com  Fax: 1-631-938-8127

 45-1 Ramsey Road, Shirley, NY 11967, USA