

Recombinant Human PAPPA protein, His-tagged

Cat. No. PAPPA-7721H Lot. No. (See product label)

SPECIFICATION

Product Overview	Recombinant Human PAPPA aa. (Leu317~Pro532 (Accession # Q13219)) fused with N-terminal His tag was produced in E. coli cells.
Species	Human
Source	E.coli
ProteinLength	Leu317~Pro532
Description	This gene encodes a secreted metalloproteinase which cleaves insulin-like growth factor binding proteins (IGFBPs). It is thought to be involved in local proliferative processes such as wound healing and bone remodeling. Low plasma level of this protein has been suggested as a biochemical marker for pregnancies with aneuploid fetuses.
Form	Freeze-dried powder
Molecular Mass	28kDa as determined by SDS-PAGE reducing conditions.
Endotoxin	<1.0EU per 1g (determined by the LAL method)
Purity	>95%
Characteristic	The isoelectric point is 5.3.

 Tel: 1-631-559-9269 1-516-512-3133

 Email: info@creative-biomart.com  Fax: 1-631-938-8127

 45-1 Ramsey Road, Shirley, NY 11967, USA

Applications	SDS-PAGE; WB; ELISA; IP.
Stability	The thermal stability is described by the loss rate. The loss rate was determined by accelerated thermal degradation test, that is, incubate the protein at 37°C for 48h, and no obvious degradation and precipitation were observed. The loss rate is less than 5% within the expiration date under appropriate storage condition.
Storage	Avoid repeated freeze/thaw cycles. Store at 2-8°C for one month. Aliquot and store at -80°C for 12 months.
Storage buffer	Supplied as lyophilized form in PBS, pH 7.4, containing 5% sucrose, 0.01% sarcosyl.
Reconstitution	Reconstitute in sterile PBS, pH7.2-pH7.4.

GENE INFORMATION

Gene Name	PAPPA pappalysin 1 [Homo sapiens (human)]
Official Symbol	PAPPA
Synonyms	PAPA; DIPLA1; PAPP-A; PAPPA1; ASBABP2; IGFBP-4ase; IGF-dependent IGFBP-4 protease; aspecific BCL2 ARE-binding protein 2; differentially placenta 1 expressed protein; insulin-like growth factor-dependent IGF binding protein-4 protease; pregnancy-associated plasma protein A; pregnancy-associated plasma protein A, pappalysin 1; pappalysin-1
Gene ID	5069
mRNA Refseq	NM_002581.4
Protein Refseq	NP_002572.2

 Tel: 1-631-559-9269 1-516-512-3133

 Email: info@creative-biomart.com  Fax: 1-631-938-8127

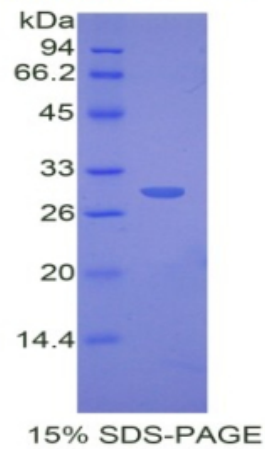
 45-1 Ramsey Road, Shirley, NY 11967, USA

UniProt ID

Q13219

SDS-PAGE

Human PAPP A



 Tel: 1-631-559-9269 1-516-512-3133

 Email: info@creative-biomart.com  Fax: 1-631-938-8127

 45-1 Ramsey Road, Shirley, NY 11967, USA