

Recombinant Human PARG Protein, His-tagged

Cat. No. PARG-1530H Lot. No. (See product label)

SPECIFICATION

Product Overview	Recombinant human PARG protein (Met1~Thr976) with a N-terminal His tag was expressed in E.coli.
Species	Human
Source	E.coli
ProteinLength	1-976 a.a.
Description	Poly(ADP-ribose) glycohydrolase (PARG) is the major enzyme responsible for the catabolism of poly(ADP-ribose), a reversible covalent-modifier of chromosomal proteins. The protein is found in many tissues and may be subject to proteolysis generating smaller, active products. Several transcript variants encoding different isoforms have been found for this gene.
Form	Freeze-dried powder
Molecular Mass	115 kDa
Endotoxin	<1.0EU per 1g (determined by the LAL method)
Purity	> 97%
Applications	Positive Control; Immunogen; SDS-PAGE; WB.

 Tel: 1-631-559-9269 1-516-512-3133

 Email: info@creative-biomart.com  Fax: 1-631-938-8127

 45-1 Ramsey Road, Shirley, NY 11967, USA

Stability	The thermal stability is described by the loss rate. The loss rate was determined by accelerated thermal degradation test, that is, incubate the protein at 37 centigrade for 48h, and no obvious degradation and precipitation were observed. The loss rate is less than 5% within the expiration date under appropriate storage condition.
Storage	Avoid repeated freeze/thaw cycles. Store at 2-8 centigrade for one month. Aliquot and store at -80 centigrade for 12 months.
Concentration	200 g/mL
Storage Buffer	20mM Tris, 150mM NaCl, pH8.0, containing 1mM EDTA, 1mM DTT, 0.01% SKL, 5% Trehalose and Proclin300.
Reconstitution	Reconstitute in 20mM Tris, 150mM NaCl (pH8.0) to a concentration of 0.1-1.0 mg/mL. Do not vortex.

GENE INFORMATION

Gene Name	PARG poly(ADP-ribose) glycohydrolase [Homo sapiens (human)]
Official Symbol	PARG
Synonyms	PARG; poly(ADP-ribose) glycohydrolase; PARG99; poly(ADP-ribose) glycohydrolase; mitochondrial poly(ADP-ribose) glycohydrolase; poly(ADP-ribose) glycohydrolase 60 kDa isoform; EC 3.2.1.143
Gene ID	8505
mRNA Refseq	NM_003631
Protein Refseq	NP_003622

 Tel: 1-631-559-9269 1-516-512-3133

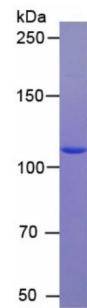
 Email: info@creative-biomart.com  Fax: 1-631-938-8127

 45-1 Ramsey Road, Shirley, NY 11967, USA

MIM 603501

UniProt ID Q86W56

SDS-PAGE



 Tel: 1-631-559-9269 1-516-512-3133

 Email: info@creative-biomart.com  Fax: 1-631-938-8127

 45-1 Ramsey Road, Shirley, NY 11967, USA