

Active Recombinant Human PARK7, GST-tagged

Cat. No. PARK7-115H Lot. No. (See product label)

SPECIFICATION

Product Overview	Recombinant Human PARK7 fused with GST-tag at N-terminal, was expressed in E. coli.
Species	Human
Source	E.coli
Description	The product of this gene belongs to the peptidase C56 family of proteins. It acts as a positive regulator of androgen receptor-dependent transcription. It may also function as a redox-sensitive chaperone, as a sensor for oxidative stress, and it apparently protects neurons against oxidative stress and cell death. Defects in this gene are the cause of autosomal recessive early-onset Parkinson disease 7. Two transcript variants encoding the same protein have been identified for this gene.
Molecular Mass	19.9 kDa
Activity	Cleaved DJ-1 was assayed for protease activity.
Purity	Greater than 95%, as determined by SDS-PAGE.
Applications	ELISA, WB, Protease Activity Determination.
Storage	Purified DJ-1 is supplied as sterile and frozen at 1 mg/ml in 50 mM Tris-Cl/150mM NaCl, pH=8.0. Store at 2-4°C for immediate use within 1-2 weeks or at -80°C for up to 12 months. Avoid repeated freeze-thaw cycles.

 Tel: 1-631-559-9269 1-516-512-3133

 Email: info@creative-biomart.com  Fax: 1-631-938-8127

 45-1 Ramsey Road, Shirley, NY 11967, USA

OfficialSymbol PARK7

GENE INFORMATION

Gene Name [PARK7 Parkinson disease \(autosomal recessive, early onset\) 7 \[Homo sapiens \]](#)

Synonyms PARK7; Parkinson disease (autosomal recessive, early onset) 7; DJ1; DJ-1; FLJ27376; FLJ34360; FLJ92274; Parkinson disease protein 7; oncogene DJ1; oncogene DJ1; protein DJ-1; OTTHUMP00000001350; OTTHUMP00000001351; OTTHUMP00000001348; OTTHUMP00000001349

Gene ID [11315](#)

mRNA Refseq [NM_001123377](#)

Protein Refseq [NP_001116849](#)

MIM [602533](#)

UniProt ID [Q99497](#)

Chromosome Location 1p36.23

Pathway Parkinson's disease; Alpha-synuclein signaling

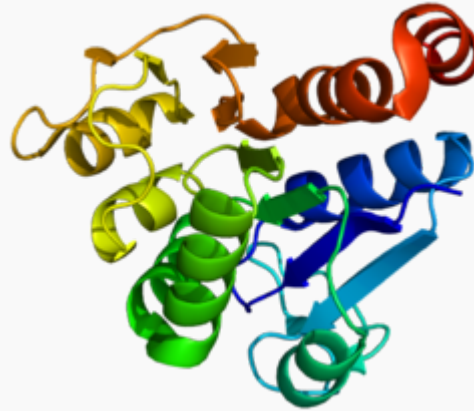
Function peroxiredoxin activity; protein binding

 Tel: 1-631-559-9269 1-516-512-3133

 Email: info@creative-biomart.com  Fax: 1-631-938-8127

 45-1 Ramsey Road, Shirley, NY 11967, USA

PDB rendering
based on 1j42.



 Tel: 1-631-559-9269 1-516-512-3133

 Email: info@creative-biomart.com  Fax: 1-631-938-8127

 45-1 Ramsey Road, Shirley, NY 11967, USA