

Active Recombinant Human PARK7 protein, His-tagged

Cat. No. PARK7-3978H Lot. No. (See product label)

SPECIFICATION

Product Overview Active Recombinant Human PARK7 protein(Q99497)(1-189 aa), fused with N-terminal His tag, was expressed in E.coli.

Species Human

Source E.coli

ProteinLength 1-189 aa

Form PBS, pH7.4, containing 0.01% SKL, 1mM DTT, 5% Trehalose and Proclin300.

Bio-activity

Parkinson Disease Protein 7 (PARK7), a small multifunctional protein (20 kDa) containing 189 amino acids, which participates in transcriptional regulation and mitochondrial regulation, and acts as a molecular chaperone, oxidative stress sensor, and glyoxalase. It has also been described as a protein and nucleotide deglycase. Mutations in Park7 are associated with a small percentage of hereditary early onset Parkinson's disease. Leucine Rich Repeat Kinase 2 (LRRK2) has been identified as an interactor of PARK7, thus a functional binding ELISA assay was conducted to detect the interaction of recombinant human PARK7 and recombinant human LRRK2. Briefly, PARK7 was diluted serially in PBS with 0.01% BSA (pH 7.4). Duplicate samples of 100 µl were then transferred to LRRK2-coated microtiter wells and incubated for 1h at 37°C. Wells were washed with PBST and incubated for 1h with anti-PARK7 pAb, then aspirated and washed 3 times. After incubation with HRP labelled secondary antibody for 1h at 37°C, wells were aspirated and washed 5 times.

 Tel: 1-631-559-9269 1-516-512-3133

 Email: info@creative-biomart.com  Fax: 1-631-938-8127

 45-1 Ramsey Road, Shirley, NY 11967, USA

With the addition of substrate solution, wells were incubated 15-25 minutes at 37°C. Finally, add 50 µ stop solution to the wells and read at 450/630 nm immediately. The binding activity of recombinant human PARK7 and recombinant human LRRK2 was shown, the EC50 for this effect is 0.16 ug/mL.

Molecular Mass	21.1kDa
Endotoxin	<1.0EU per 1µg (determined by the LAL method).
Purity	> 90%
Storage	Avoid repeated freeze/thaw cycles. Store at 2-8°C for one month. Store at -20°C for 12 months. Aliquot and store at -80°C for 12 months.
Reconstitution	Reconstitute in 10mM PBS (pH7.4) to a concentration of 0.1-1.0 mg/mL. Do not vortex.

GENE INFORMATION

Gene Name	PARK7 parkinson protein 7 [Homo sapiens]
Official Symbol	PARK7
Synonyms	PARK7; parkinson protein 7; Parkinson disease (autosomal recessive, early onset) 7; protein DJ-1; DJ 1; DJ1; oncogene DJ1; DJ-1; FLJ27376; FLJ34360; FLJ92274;
Gene ID	11315
mRNA Refseq	NM_001123377
Protein Refseq	NP_001116849

 Tel: 1-631-559-9269 1-516-512-3133

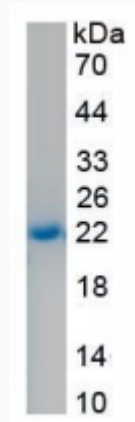
 Email: info@creative-biomart.com  Fax: 1-631-938-8127

 45-1 Ramsey Road, Shirley, NY 11967, USA

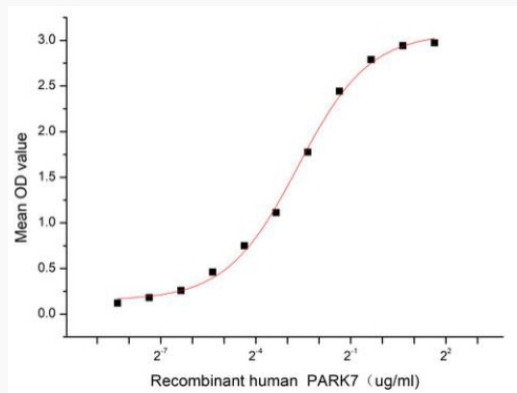
MIM 602533

UniProt ID Q99497

SDS-PAGE



Activity



 Tel: 1-631-559-9269 1-516-512-3133

 Email: info@creative-biomart.com  Fax: 1-631-938-8127

 45-1 Ramsey Road, Shirley, NY 11967, USA