

Recombinant Human PARL Full Length Transmembrane protein, Myc-tagged

Cat. No. PARL-394H **Lot. No.** (See product label)

SPECIFICATION

Product Overview	Recombinant Human PARL protein(Q9H300)(53-379aa), fused with C-terminal Myc tag, was expressed in in vitro E. coli expression system.
Species	Human
Source	E.coli
ProteinLength	53-379aa
Form	If the delivery form is liquid, the default storage buffer is Tris/PBS-based buffer, 5%-50% glycerol. If the delivery form is lyophilized powder, the buffer before lyophilization is Tris/PBS-based buffer, 6% Trehalose, pH 8.0.
Molecular Mass	37.8 kDa
AA Sequence	FRKAPRKVEPRRSDPGTSGEAYKRSALIPPVEETVFYPSYPPIRSLIKPLFFTVGFTG CAFGSAAIWQYESLKS RVQSYFDGIKADWLDSIRPQKEGDFRKEINKWWNNLS DGQ RTVTGIIAANVLVFCLWRVPSLQRTMIRYFTSNPASKVLCSPMLLSTFSHFSLFHMAA NMYVLWSFSSSIVNILGQEQLFMAVYLSAGVISNFVSYVGVK VATGRYGP SLGASGAIM TVLAAVCTKIPEGRLAIIFLPMFTFTAGNALKAIAMDTAGMILGWKFFDHA AHLGGAL FGIWYVTYGH ELIWKNREPLVKI WHEIRTNGPKKGGGSK
Purity	Greater than 85% as determined by SDS-PAGE.

 Tel: 1-631-559-9269 1-516-512-3133

 Email: info@creative-biomart.com  Fax: 1-631-938-8127

 45-1 Ramsey Road, Shirley, NY 11967, USA

Storage Store at -20°C/-80°C upon receipt, aliquoting is necessary for mutiple use. Avoid repeated freeze-thaw cycles.

Reconstitution Please reconstitute protein in deionized sterile water to a concentration of 0.1-1.0 mg/mL. We recommend to add 5-50% of glycerol (final concentration) and aliquot for long-term storage at -20°C/-80°C.

GENE INFORMATION

Gene Name [PARL presenilin associated, rhomboid-like \[Homo sapiens \]](#)

Official Symbol [PARL](#)

Synonyms PARL; presenilin associated, rhomboid-like; PSARL; presenilins-associated rhomboid-like protein, mitochondrial; PRO2207; PSARL1; RHBDS1; rhomboid 7 homolog 1 (Drosophila); rhomboid 7 homolog 1; mitochondrial intramembrane cleaving protease PARL; mitochondrial intramembrane-cleaving protease PARL; PSENIP2;

Gene ID [55486](#)

mRNA Refseq [NM_001037639](#)

Protein Refseq [NP_001032728](#)

MIM [607858](#)

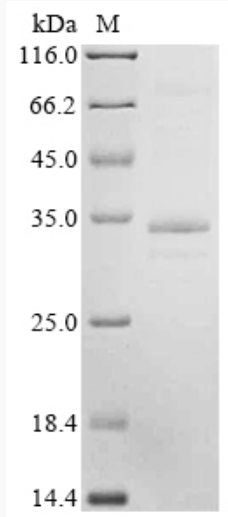
UniProt ID [Q9H300](#)

 Tel: 1-631-559-9269 1-516-512-3133

 Email: info@creative-biomart.com  Fax: 1-631-938-8127

 45-1 Ramsey Road, Shirley, NY 11967, USA

SDS-PAGE



 Tel: 1-631-559-9269 1-516-512-3133

 Email: info@creative-biomart.com  Fax: 1-631-938-8127

 45-1 Ramsey Road, Shirley, NY 11967, USA