

## Recombinant Human PARP1 Protein, His tagged

Cat. No. PARP1-001H Lot. No. (See product label)

### SPECIFICATION

<b>Product Overview</b>	Recombinant Human PARP1 protein (71-328 aa) with His tag was expressed in E. coli.
<b>Species</b>	Human
<b>Source</b>	E.coli
<b>ProteinLength</b>	71-328 aa
<b>Description</b>	This gene encodes a chromatin-associated enzyme, poly(ADP-ribosyl)transferase, which modifies various nuclear proteins by poly(ADP-ribosyl)ation. The modification is dependent on DNA and is involved in the regulation of various important cellular processes such as differentiation, proliferation, and tumor transformation and also in the regulation of the molecular events involved in the recovery of cell from DNA damage. In addition, this enzyme may be the site of mutation in Fanconi anemia, and may participate in the pathophysiology of type I diabetes.
<b>Molecular Mass</b>	30 kDa
<b>AA Sequence</b>	MVDGFSELRWDDQQKVKKTAEAGGVTGKGQDGIGSKAEKTLGDFAAEYAKSNRST CKGCMKIEKGGQVRLSKKMVDPEKPQLGMIDRWYHPGCFVKNREELGFRPEYSAS QLKGFSLLATEDKEALKKQLPGVKSEGKRKGDEVDGVDEVAKKSKKEKDKDSKLE KALKAQNDLIWNKDELKKVCSTNDLKELLIFNKQQVPSGESAILDRVADGMVFGALL PCEECGQLVFKSDAYYCTGDVTAWTKCMVKTQTPHHHHHHHH

 Tel: 1-631-559-9269 1-516-512-3133

 Email: [info@creative-biomart.com](mailto:info@creative-biomart.com)  Fax: 1-631-938-8127

 45-1 Ramsey Road, Shirley, NY 11967, USA

<b>Endotoxin</b>	< 1 EU/μg by LAL.
<b>Purity</b>	> 90 % by SDS-PAGE
<b>Storage</b>	Store it under sterile conditions at -20 to -80 centigrade. It is recommended that the protein be aliquoted for optimal storage. Avoid repeated freeze-thaw cycles.
<b>Storage Buffer</b>	Sterile PBS, pH6.5, 10 % Glycerol. 8 % Trehalose
<b>Concentration</b>	0.88 mg/mL by BCA

## GENE INFORMATION

<b>Gene Name</b>	PARP1 poly(ADP-ribose) polymerase 1 [ Homo sapiens (human) ]
<b>Official Symbol</b>	PARP1
<b>Synonyms</b>	PARP1; poly (ADP-ribose) polymerase 1; ADP ribosyltransferase (NAD+; poly (ADP ribose) polymerase), ADPRT, poly (ADP ribose) polymerase family, member 1, PPOL; poly [ADP-ribose] polymerase 1; PARP; poly(ADP-ribose) polymerase; poly(ADP-ribose) synthetase; poly[ADP-ribose] synthase 1; poly(ADP-ribosyl)transferase; ADP-ribosyltransferase NAD(+); NAD(+) ADP-ribosyltransferase 1; poly (ADP-ribose) polymerase family, member 1; ADP-ribosyltransferase (NAD+; poly (ADP-ribose) polymerase); PPOL; ADPRT; ADPRT1; PARP-1; ADPRT 1; pADPRT-1
<b>Gene ID</b>	142
<b>mRNA Refseq</b>	NM_001618
<b>Protein Refseq</b>	NP_001609

 Tel: 1-631-559-9269 1-516-512-3133

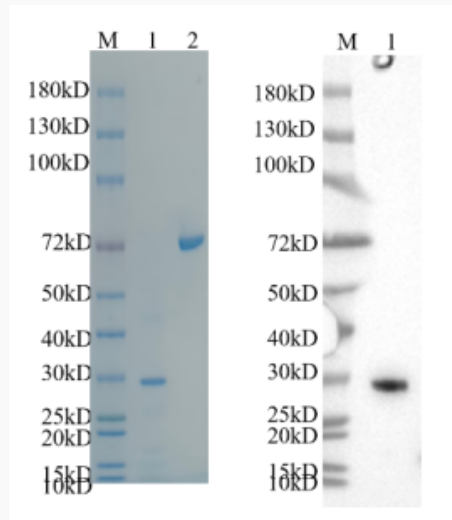
 Email: [info@creative-biomart.com](mailto:info@creative-biomart.com)  Fax: 1-631-938-8127

 45-1 Ramsey Road, Shirley, NY 11967, USA

MIM 173870

UniProt ID P09874

Reducing 4 %-20 %  
SDS-PAGE (CBB  
stained) and WB  
(Anti-His Mouse  
Monoclonal  
antibody) analysis  
profiles of purified  
PARP1.



1. PARP1: 1  $\mu$ g
2. BSA: 1  $\mu$ g

 Tel: 1-631-559-9269 1-516-512-3133

 Email: [info@creative-biomart.com](mailto:info@creative-biomart.com)  Fax: 1-631-938-8127

 45-1 Ramsey Road, Shirley, NY 11967, USA