

## Active Recombinant Human PARP1 Protein, GST-tagged

Cat. No. PARP1-010H Lot. No. (See product label)

### SPECIFICATION

<b>Product Overview</b>	Active recombinant human N-terminal GST-tagged full length PARP1 protein (2-1041) was expressed in insect cells.
<b>Species</b>	Human
<b>Source</b>	Insect Cells
<b>ProteinLength</b>	2-1041
<b>Description</b>	This gene encodes a chromatin-associated enzyme, poly(ADP-ribosyl)transferase, which modifies various nuclear proteins by poly(ADP-ribosyl)ation. The modification is dependent on DNA and is involved in the regulation of various important cellular processes such as differentiation, proliferation, and tumor transformation and also in the regulation of the molecular events involved in the recovery of cell from DNA damage. In addition, this enzyme may be the site of mutation in Fanconi anemia, and may participate in the pathophysiology of type I diabetes.
<b>Bio-activity</b>	Ribosylation activity measured by chemiluminescent assay.
<b>Molecular Mass</b>	139 kDa
<b>Purity</b>	≥80% as determined by SDS-PAGE
<b>Stability</b>	≥ 2 years

 Tel: 1-631-559-9269 1-516-512-3133

 Email: [info@creative-biomart.com](mailto:info@creative-biomart.com)  Fax: 1-631-938-8127

 45-1 Ramsey Road, Shirley, NY 11967, USA

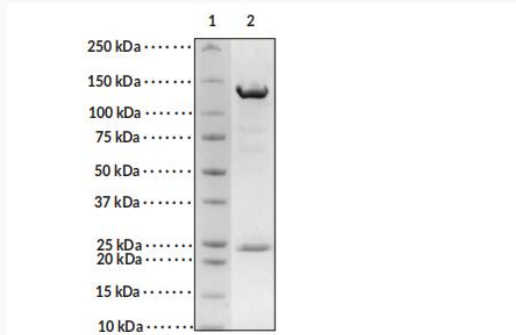
<b>Storage</b>	At -80 centigrade.
<b>Storage Buffer</b>	40 mM Tris, pH 8.0, with 110 mM NaCl, 2.2 mM KCl, 2 mM glutathione, 3 mM DTT and 20% glycerol
<b>GENE INFORMATION</b>	
<b>Gene Name</b>	PARP1 poly(ADP-ribose) polymerase 1 [ Homo sapiens (human) ]
<b>Official Symbol</b>	PARP1
<b>Synonyms</b>	PARP1; poly(ADP-ribose) polymerase 1; PARP; PPOL; ADPRT; ARTD1; ADPRT1; PARP-1; ADPRT 1; pADPRT-1; poly [ADP-ribose] polymerase 1; ADP-ribosyltransferase (NAD+; poly (ADP-ribose) polymerase); ADP-ribosyltransferase NAD(+); ADP-ribosyltransferase diphtheria toxin-like 1; DNA ADP-ribosyltransferase PARP1; NAD(+) ADP-ribosyltransferase 1; poly (ADP-ribose) polymerase family, member 1; poly(ADP-ribose) synthetase; poly(ADP-ribosyl)transferase; poly[ADP-ribose] synthase 1; protein poly-ADP-ribosyltransferase PARP1; EC 2.4.2.30
<b>Gene ID</b>	142
<b>mRNA Refseq</b>	NM_001618
<b>Protein Refseq</b>	NP_001609
<b>MIM</b>	173870
<b>UniProt ID</b>	P09874

 Tel: 1-631-559-9269 1-516-512-3133

 Email: [info@creative-biomart.com](mailto:info@creative-biomart.com)  Fax: 1-631-938-8127

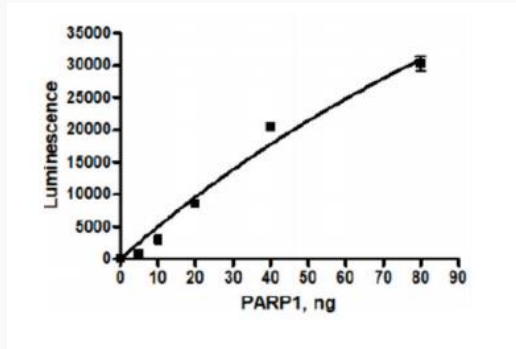
 45-1 Ramsey Road, Shirley, NY 11967, USA


**SDS-PAGE analysis  
of PARP1**




Lane 1: MW Markers  
Lane 2: PARP1 (2 µg)

**Specific Activity**



 Tel: 1-631-559-9269 1-516-512-3133

 Email: [info@creative-biomart.com](mailto:info@creative-biomart.com)  Fax: 1-631-938-8127

 45-1 Ramsey Road, Shirley, NY 11967, USA