

Recombinant Human PARP1 protein, His-tagged

Cat. No. PARP1-01H Lot. No. (See product label)

SPECIFICATION

Product Overview	Recombinant Human PARP1 protein(NP_001609.2), fused to His-tag, was expressed in E. coli.
Species	Human
Source	E.coli
Description	This gene encodes a chromatin-associated enzyme, poly(ADP-ribosyl)transferase, which modifies various nuclear proteins by poly(ADP-ribosyl)ation. The modification is dependent on DNA and is involved in the regulation of various important cellular processes such as differentiation, proliferation, and tumor transformation and also in the regulation of the molecular events involved in the recovery of cell from DNA damage. In addition, this enzyme may be the site of mutation in Fanconi anemia, and may participate in the pathophysiology of type I diabetes.
Form	PBS, pH 7.0
Molecular Mass	The protein has a calculated MW of 41.6 kDa.
AA Sequence	MNHKVVHHHHHHHHHHMKS KLPKPVQDLIKMIFDVESMKKAMVEYEIDLQKMPLGKL SKRQIQAAAYSILSEVQQAVSQGSSDSQILDLSNRFYTLIPHDFGMKKPPLLNNADSVQ AKAEMLDNLLDIEVAYSLLRGGSDSSKDPIDVNYEKLKTDIKVVDRDSEEAEIIRKYV KNTHATTHNAYDLEVIDIFKIEREGECQRYKPFKQLHNRRLLWHGSRTTNFAGILSQ GLRIAPPEAPVTGYMFGKGIYFADMVSKSANYCHTSQGDPIGLILLGEVALGNMYEL KHASHISKLPKGGKHSVKGLGKTTDPDSANISLDGVDVPLGTGISSGVNDTSLLYNEYI

 Tel: 1-631-559-9269 1-516-512-3133

 Email: info@creative-biomart.com  Fax: 1-631-938-8127

 45-1 Ramsey Road, Shirley, NY 11967, USA

VYDIAQVNLKYLLKLFNFKTSW

Purity >= 95% by SDS-PAGE

Storage Store it under sterile conditions at -20 to -80 °C. It is recommended that the protein be aliquoted for optimal storage. Avoid repeated freeze-thaw cycles.

Concentration 0.5 mg/ml

GENE INFORMATION

Gene Name [PARP1 poly\(ADP-ribose\) polymerase 1 \[Homo sapiens \(human\) \]](#)

Official Symbol [PARP1](#)

Synonyms PARP; PPOL; ADPRT; ARTD1; ADPRT1; PARP-1; ADPRT 1; pADPRT-1

Gene ID [142](#)

mRNA Refseq [NM_001618.4](#)

Protein Refseq [NP_001609.2](#)

MIM [173870](#)

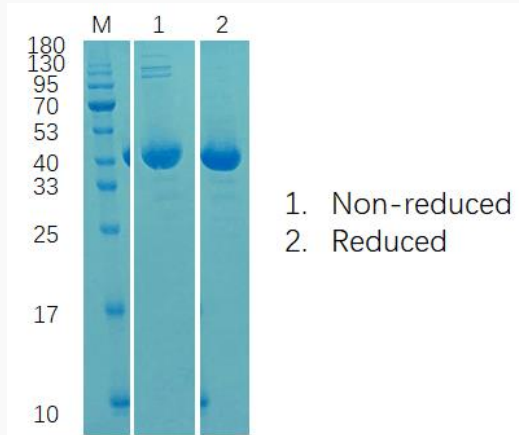
UniProt ID [P09874](#)

 Tel: 1-631-559-9269 1-516-512-3133

 Email: info@creative-biomart.com  Fax: 1-631-938-8127

 45-1 Ramsey Road, Shirley, NY 11967, USA

**SDS-PAGE of
PARP1-01H**



 Tel: 1-631-559-9269 1-516-512-3133

 Email: info@creative-biomart.com  Fax: 1-631-938-8127

 45-1 Ramsey Road, Shirley, NY 11967, USA