

Recombinant Human PARP1 Protein, MYC/DDK-tagged, C13 and N15-labeled

Cat. No. PARP1-075H **Lot. No.** (See product label)

SPECIFICATION

Product Overview	PARP1 MS Standard C13 and N15-labeled recombinant protein (NP_001609) with a C-terminal MYC/DDK tag, was expressed in HEK293 cells.
Species	Human
Source	HEK293
Description	This gene encodes a chromatin-associated enzyme, poly(ADP-ribosyl)transferase, which modifies various nuclear proteins by poly(ADP-ribosyl)ation. The modification is dependent on DNA and is involved in the regulation of various important cellular processes such as differentiation, proliferation, and tumor transformation and also in the regulation of the molecular events involved in the recovery of cell from DNA damage. In addition, this enzyme may be the site of mutation in Fanconi anemia, and may participate in the pathophysiology of type I diabetes.
Molecular Mass	112.9 kDa
AA Sequence	MAESSDKLYRVEYAKSGRASCKKCESESIPKDSLRLMAIMVQSPMFDGKVPWHYHFS CFWKVGH SIRHPDVEVDGFSELRWDDQQKVKKTAEAGGVTGKGQDGIGSKAEKTL GDFAAEYAKSNRSTCKGCMKIEKGQVRLSKKMVDPEKPQLGMIDRWYHPGCFVK NREELGFRPEYSASQLKGFSLLEDKEALKKQLPGVKSEGKRKGDEVDGVDEVAK KSKKKEKDKSKLEKALKAQNDLIWNIKDELKKVCSTNDLKELLIFNKQQVPSGESAI LDRVADGMVFGALLPCEECGQLVFKSDAYYCTGDVTAWTKCMVKTQTPNRKEWV

 Tel: 1-631-559-9269 1-516-512-3133

 Email: info@creative-biomart.com  Fax: 1-631-938-8127

 45-1 Ramsey Road, Shirley, NY 11967, USA

TPKEFREISYLKCLKVKKQDRIFPPETSASVAATPPPSTASAPAAVNSSASADKPLSN
 MKILTLGKLSRNKDEVKAMIEKLGKLTGTANKASLCISTKKEVEKMNKKMEEVKEA
 NIRVVSEDFLQDVSASTKSLQELFLAHILSPWGAEVKAEPVEVVAPRGKSGAALSKK
 SKGQVKEEGINKSEKRMKLTGKGAAVDPDSGLEHSAHVLEKGGKVFSATLGLVDIV
 KGTNSYYKLQLEDDKENRYWIFRSWGRVGTVIGSNKLEQMPSKEDAIEHFMKLYE
 EKTGNAWHSKNFTKYPKKFYPLEIDYQGDEEAVKCLTVNPGTKSKLPKPVQDLIKMI
 FDVESMKKAMVEYEIDLQKMPLGKLSKRQIAAYSILSEVQQAVSQGSSDSQILDLS
 NRFYTLIPHDFGMKKPPLLNNADSVQAKAEMLDNLLDIEVAYSLLRGGSDSSKDP
 DVNYEKLKTDIKVVDRDSEEAEIIRKYVKNTTHATTHNAYDLEVIDIFKIEREGECQRYK
 PFKQLHNRLLWHGSRTTNFAGILSQGLRIAPPEAPVTGYMFGKGIYFADMVSKSAN
 YCHTSQGDPIGLILLGEVALGNMYELKHASHISKLPKGKHSVKGLGKTTDPDSANISL
 DGVDVPLGTGISSGVNDTSLLYNEYIVYDIAQVNLKYLKLLKLFNFKTSWTRTRPLEQ
 KLISEEDLAANDILDYKDDDDKV

Purity > 80% as determined by SDS-PAGE and Coomassie blue staining

Stability Stable for 3 months from receipt of products under proper storage and handling conditions.

Storage Store at -80 centigrade. Avoid repeated freeze-thaw cycles.

Concentration 50 µg/mL as determined by BCA

Storage Buffer 100 mM glycine, 25 mM Tris-HCl, pH 7.3.

GENE INFORMATION

Gene Name PARP1 poly(ADP-ribose) polymerase 1 [Homo sapiens (human)]

Official Symbol PARP1

 Tel: 1-631-559-9269 1-516-512-3133

 Email: info@creative-biomart.com  Fax: 1-631-938-8127

 45-1 Ramsey Road, Shirley, NY 11967, USA

Synonyms PARP1; poly(ADP-ribose) polymerase 1; ADPRT; ADPRT 1; ADPRT1; ARTD1; pADPRT-1; PARP; PARP-1; PPOL; poly [ADP-ribose] polymerase 1; ADP-ribosyltransferase (NAD+; poly (ADP-ribose) polymerase); ADP-ribosyltransferase NAD(+); ADP-ribosyltransferase diphtheria toxin-like 1; DNA ADP-ribosyltransferase PARP1; NAD(+) ADP-ribosyltransferase 1; poly (ADP-ribose) polymerase family, member 1; poly(ADP-ribose) synthetase; poly(ADP-ribosyl)transferase; poly[ADP-ribose] synthase 1; protein poly-ADP-ribosyltransferase PARP1; EC 2.4.2.30

Gene ID [142](#)

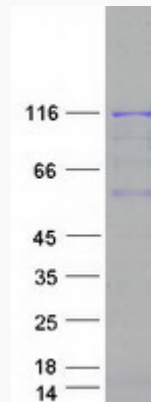
mRNA Refseq [NM_001618](#)

Protein Refseq [NP_001609](#)

MIM [173870](#)

UniProt ID [P09874](#)

SDS-PAGE



 Tel: 1-631-559-9269 1-516-512-3133

 Email: info@creative-biomart.com  Fax: 1-631-938-8127

 45-1 Ramsey Road, Shirley, NY 11967, USA