

Recombinant Human PARP1 Protein (Thr373-Glu540), N-His tagged

Cat. No. PARP1-4026H Lot. No. (See product label)

SPECIFICATION

| | |
|-------------------------|-----------------------------------------------------------------------------------------------------------------------------------------------------------------------------------------|
| Product Overview | Recombinant human PARP1 (Thr373-Glu540) fused with the N-His tag was expressed in E. coli. |
| Species | Human |
| Source | E.coli |
| ProteinLength | Thr373-Glu540 |
| Form | Lyophilized powder/frozen liquid |
| Molecular Mass | 20.14 kDa |
| Purity | >90% as determined by SDS-PAGE. |
| Notes | For research use only. |
| Storage | Use a manual defrost freezer and avoid repeated freeze thaw cycles. Store at 2 to 8 centigrade for one week. Store at -20 to -80 centigrade for twelve months from the date of receipt. |
| Storage Buffer | 0.01M PBS, pH 7.4, 0.02% NLS |
| Reconstitution | Reconstitute in sterile water for a stock solution. |

 Tel: 1-631-559-9269 1-516-512-3133

 Email: info@creative-biomart.com  Fax: 1-631-938-8127

 45-1 Ramsey Road, Shirley, NY 11967, USA

Shipping They are shipped out with dry ice/blue ice unless customers require otherwise.

GENE INFORMATION

Gene Name PARP1 poly (ADP-ribose) polymerase 1 [Homo sapiens (human)]

Official Symbol PARP1

Synonyms PARP1; poly (ADP-ribose) polymerase 1; ADP ribosyltransferase (NAD+; poly (ADP ribose) polymerase), ADPRT, poly (ADP ribose) polymerase family, member 1, PPOL; poly [ADP-ribose] polymerase 1; PARP; poly (ADP-ribose) polymerase; poly (ADP-ribose) synthetase; poly[ADP-ribose] synthase 1; poly (ADP-ribosyl) transferase; ADP-ribosyltransferase NAD (+); NAD (+) ADP-ribosyltransferase 1; poly (ADP-ribose) polymerase family, member 1; ADP-ribosyltransferase (NAD+; poly (ADP-ribose) polymerase); PPOL; ADPRT; ADPRT1; PARP-1; ADPRT 1; pADPRT-1;

Gene ID 142

mRNA Refseq NM_001618

Protein Refseq NP_001609

MIM 173870

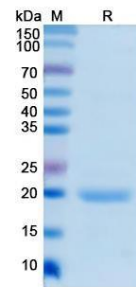
UniProt ID P09874

 Tel: 1-631-559-9269 1-516-512-3133

 Email: info@creative-biomart.com  Fax: 1-631-938-8127

 45-1 Ramsey Road, Shirley, NY 11967, USA

SDS-PAGE



 Tel: 1-631-559-9269 1-516-512-3133

 Email: info@creative-biomart.com  Fax: 1-631-938-8127

 45-1 Ramsey Road, Shirley, NY 11967, USA