

# Recombinant Human Poly (ADP-ribose) Polymerase 1, GST-tagged

**Cat. No.** PARP1-430H    **Lot. No.** (See product label)

## SPECIFICATION

<b>Product Overview</b>	Recombinant Human PARP1, full length with N-terminal GST tag expressed in a <i>Baculovirus</i> infected Sf9 cell expression system. MW = 140kDa.
<b>Species</b>	Human
<b>Source</b>	Sf9 Cells
<b>Description</b>	Poly [ADP-ribose] polymerase 1 is an enzyme that in humans is encoded by the PARP1 gene.
<b>Purity</b>	>80%.
<b>Application</b>	Useful for the study of enzyme kinetics, screening inhibitors, and selectivity profiling.
<b>Formulated In</b>	25 mM Tris-HCl, pH 8.0, 100 mM NaCl, 0.05% Tween-20, 30% glycerol, and 3 mM DTT.
<b>Stability</b>	>6 months at -80°C.
<b>Full Length</b>	Full L.

## GENE INFORMATION

<b>Gene Name</b>	PARP1 poly (ADP-ribose) polymerase 1 [ <i>Homo sapiens</i> ]
------------------	--

 Tel: 1-631-559-9269    1-516-512-3133

 Email: [info@creative-biomart.com](mailto:info@creative-biomart.com)     Fax: 1-631-938-8127

 45-1 Ramsey Road, Shirley, NY 11967, USA

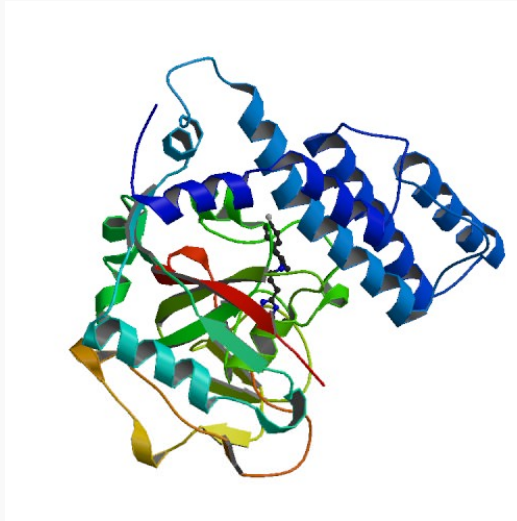
<b>Synonyms</b>	PARP1; poly (ADP-ribose) polymerase 1; ADP-ribosyltransferase (NAD+; poly (ADP-ribose) polymerase); ADP-ribosyltransferase NAD(+); poly (ADP-ribose) polymerase family, member 1; poly(ADP-ribose) polymerase; poly(ADP-ribose) synthetase; poly(ADP-ribosyl)transferase; PARP; PPOL; ADPRT; ADPRT1; PARP-1; pADPRT-1; EC 2.4.2.30
<b>Gene ID</b>	<a href="#">142</a>
<b>mRNA Refseq</b>	<a href="#">NM_001618</a>
<b>Protein Refseq</b>	<a href="#">NP_001609</a>
<b>MIM</b>	<a href="#">173870</a>
<b>UniProt ID</b>	<a href="#">P09874</a>
<b>Chromosome Location</b>	1q41-q42
<b>Pathway</b>	Base excision repair
<b>Function</b>	DNA binding; NAD or NADH binding; NAD+ ADP-ribosyltransferase activity; identical protein binding; protein N-terminus binding; transcription factor binding; transferase activity, transferring glycosyl groups; zinc ion binding

 Tel: 1-631-559-9269 1-516-512-3133

 Email: [info@creative-biomart.com](mailto:info@creative-biomart.com)  Fax: 1-631-938-8127

 45-1 Ramsey Road, Shirley, NY 11967, USA

PDB rendering based  
on 1uk0.



 Tel: 1-631-559-9269 1-516-512-3133

 Email: [info@creative-biomart.com](mailto:info@creative-biomart.com)  Fax: 1-631-938-8127

 45-1 Ramsey Road, Shirley, NY 11967, USA