

Recombinant Human PARP1 Protein, FLAG/Avi-tagged

Cat. No. PARP1-431H Lot. No. (See product label)

SPECIFICATION

Product Overview	Human PARP1 (NM_001618), full length with N-terminal FLAG-Avi-tag™, expressed in a Baculovirus infected Sf9 cell expression system.
Species	Human
Source	Insect Cells
Description	This gene encodes a chromatin-associated enzyme, poly(ADP-ribose)transferase, which modifies various nuclear proteins by poly(ADP-ribose)ation. The modification is dependent on DNA and is involved in the regulation of various important cellular processes such as differentiation, proliferation, and tumor transformation and also in the regulation of the molecular events involved in the recovery of cell from DNA damage. In addition, this enzyme may be the site of mutation in Fanconi anemia, and may participate in the pathophysiology of type I diabetes.
Form	Aqueous buffer solution
Molecular Mass	117 kDa
Applications	Useful for the study of enzyme kinetics, screening inhibitors, and selectivity profiling.
Stability	At least 6 months at -80 centigrade.
Storage Buffer	40 mM Tris-HCl, pH 8.0, 110 mM NaCl, 2.2 mM KCl, 0.04% Tween-20, 20% glycerol, 0.2mM TCEP, 80 µg/ml FLAG peptide

 Tel: 1-631-559-9269 1-516-512-3133

 Email: info@creative-biomart.com  Fax: 1-631-938-8127

 45-1 Ramsey Road, Shirley, NY 11967, USA

Shipping	-80 centigrade
Warning	Avoid freeze/thaw cycles. Storing diluted enzyme is not recommended, if necessary, use carrier protein (BSA 0.1 – 0.5%).
Full Length	Full L.

GENE INFORMATION

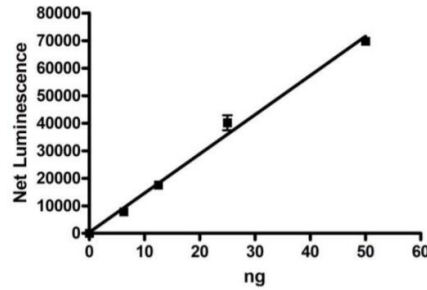
Gene Name	PARP1 poly(ADP-ribose) polymerase 1 [Homo sapiens (human)]
Official Symbol	PARP1
Synonyms	PARP1; poly(ADP-ribose) polymerase 1; PARP; PPOL; ADPRT; ARTD1; ADPRT1; PARP-1; ADPRT 1; pADPRT-1; poly [ADP-ribose] polymerase 1; ADP-ribosyltransferase (NAD+; poly (ADP-ribose) polymerase); ADP-ribosyltransferase NAD(+); ADP-ribosyltransferase diphtheria toxin-like 1; DNA ADP-ribosyltransferase PARP1; NAD(+) ADP-ribosyltransferase 1; poly (ADP-ribose) polymerase family, member 1; poly(ADP-ribose) synthetase; poly(ADP-ribosyl)transferase; poly[ADP-ribose] synthase 1; protein poly-ADP-ribosyltransferase PARP1; EC 2.4.2.30
Gene ID	142
mRNA Refseq	NM_001618
Protein Refseq	NP_001609
MIM	173870
UniProt ID	P09874

 Tel: 1-631-559-9269 1-516-512-3133

 Email: info@creative-biomart.com  Fax: 1-631-938-8127

 45-1 Ramsey Road, Shirley, NY 11967, USA

Activity



SDS-PAGE

**4-20% SDS-PAGE
Coomassie staining**

Lane 1:
3.8 µg PARP1

Lane 2:
Protein Marker

Purity: > 90%

MW: 117 kDa

