

# Recombinant Human PARP1 protein(324-541aa), His-GST-tagged

**Cat. No.** PARP1-5332H    **Lot. No.** (See product label)

## SPECIFICATION

<b>Product Overview</b>	Recombinant Human PARP1 protein(P09874)(324-541aa), fused with N-terminal His and GST tag, was expressed in E.coli.
<b>Species</b>	Human
<b>Source</b>	E.coli
<b>ProteinLength</b>	324-541aa
<b>Form</b>	If the delivery form is liquid, the default storage buffer is Tris/PBS-based buffer, 5%-50% glycerol. If the delivery form is lyophilized powder, the buffer before lyophilization is Tris/PBS-based buffer, 6% Trehalose, pH 8.0.
<b>Molecular Mass</b>	55.2 kDa
<b>Purity</b>	Greater than 85% as determined by SDS-PAGE.
<b>Storage</b>	Store at -20°C/-80°C upon receipt, aliquoting is necessary for multiple use. Avoid repeated freeze-thaw cycles.
<b>Reconstitution</b>	We recommend that this vial be briefly centrifuged prior to opening to bring the contents to the bottom. Please reconstitute protein in deionized sterile water to a concentration of 0.1-1.0 mg/mL. We recommend to add 5-50% of glycerol (final concentration) and aliquot for long-term storage at -20°C/-80°C.

 Tel: 1-631-559-9269    1-516-512-3133

 Email: [info@creative-biomart.com](mailto:info@creative-biomart.com)     Fax: 1-631-938-8127

 45-1 Ramsey Road, Shirley, NY 11967, USA

**AA Sequence**

KTQTPNRKEWVTPKEFREISYLKKLKVKKQDRIFPPETSASVAATPPPSTASAPAAV  
 NSSASADKPLSNMKILTLGKLSRNKDEVKAMIEKLGKLTGTANKASLCISTKKEVEK  
 MNKKMEEVKEANIRVVSEDFLQDVSASTKSLQELFLAHILSPWGAEVKAEPVEVVAP  
 RGKSGAALSCKSKGQVKEEGINKSEKRMKLTLLKGGAAVDPDSGLEH

**GENE INFORMATION**
**Gene Name**

[PARP1 poly \(ADP-ribose\) polymerase 1 \[ Homo sapiens \]](#)

**Official Symbol**

[PARP1](#)

**Synonyms**

PARP1; poly (ADP-ribose) polymerase 1; ADP ribosyltransferase (NAD+; poly (ADP ribose) polymerase) , ADPRT, poly (ADP ribose) polymerase family, member 1 , PPOL; poly [ADP-ribose] polymerase 1; PARP; poly(ADP-ribose) polymerase; poly(ADP-ribose) synthetase; poly[ADP-ribose] synthase 1; poly(ADP-ribosyl)transferase; ADP-ribosyltransferase NAD(+); NAD(+) ADP-ribosyltransferase 1; poly (ADP-ribose) polymerase family, member 1; ADP-ribosyltransferase (NAD+; poly (ADP-ribose) polymerase); PPOL; ADPRT; ADPRT1; PARP-1; ADPRT 1; pADPRT-1;

**Gene ID**

[142](#)

**mRNA Refseq**

[NM\\_001618](#)

**Protein Refseq**

[NP\\_001609](#)

**MIM**

[173870](#)

**UniProt ID**

[P09874](#)

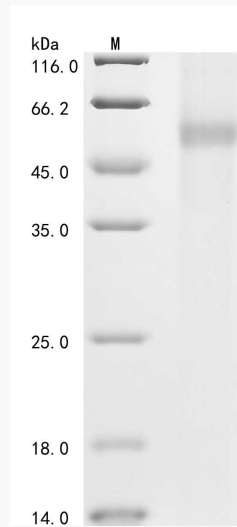
 Tel: 1-631-559-9269 1-516-512-3133

 Email: [info@creative-biomart.com](mailto:info@creative-biomart.com)  Fax: 1-631-938-8127

 45-1 Ramsey Road, Shirley, NY 11967, USA



**SDS-PAGE**



Tel: 1-631-559-9269 1-516-512-3133

Email: [info@creative-biomart.com](mailto:info@creative-biomart.com) Fax: 1-631-938-8127

45-1 Ramsey Road, Shirley, NY 11967, USA