

## Recombinant Human PARP14 protein, hFc-tagged

Cat. No. PARP14-4546H Lot. No. (See product label)

### SPECIFICATION

<b>Product Overview</b>	Recombinant Human PARP14 protein(Q460N5)(789-1400 aa), fused with N-terminal hFc tag, was expressed in Mammalian Cells.
<b>Species</b>	Human
<b>Source</b>	Mammalian Cells
<b>ProteinLength</b>	789-1400 aa
<b>Form</b>	For liquid formulations, the standard storage buffer consists of a Tris or PBS based solution supplemented with 5-50% glycerol. When provided as lyophilized powder, the product undergoes freeze-drying from a Tris- or PBS-based formulation containing 6% trehalose, adjusted to pH 8.0 prior to the lyophilization process.
<b>Molecular Mass</b>	92.2 kDa
<b>AASequence</b>	GQKCFSRRTLAPGVVLIVQQGDLARLPVDVVVNASNEDLKHYGGLAAALSKAAGPE LQADCDQIVKREGRLLPGNATISKAGKLPYHHVIHAVGPRWSGYEAPRCVYLLRRAV QLSLCLAKEYKYRSIAIPAISGVSFGFPLGRCVETIVSAIKENFQFKKDGHCLEIYLVD VSEKTVEAFAEAVKTVFKATLPDTAAPPGLPPAAAGPGKTSWEKGSLSVSPGGLQML LVKEGVQNAKTDVVVNSVPLDLVLSRGPLSKSLLKAGPELQEELDTVGGVAVSM GTVLKTSSWNLDCRYVLHVVAPEWRNGSTSSLKIMEDIIRECMEITESLSLKSIAFP GTGNLGFKNIFAELIIESEVFKFSSKNQLKTLQEVHFLHPSDHENIQAFSDEFARRAN GNLVSDKIPKAKDTQGFYGTVSSPDSGVYEMKIGSIIFQVASGDITKEEADVIVNSTS NSFNLKAGVSKAILECAGQNVERECSQQAQQRKNDYIITGGGFLRCKNIIHVIGGNDV

 Tel: 1-631-559-9269 1-516-512-3133

 Email: [info@creative-biomart.com](mailto:info@creative-biomart.com)  Fax: 1-631-938-8127

 45-1 Ramsey Road, Shirley, NY 11967, USA

KSSVSSVLQECEKKNYSSICLPAIGTGNAKQHPDKVAEAIIDAIEDFVQKGSQAQSVKK  
VKVVIFLPQVLDVVFYANMKKREGTQLSSQQSVMSK

**Purity** Greater than 90% as determined by SDS-PAGE.

**Storage** Store at -20°C/-80°C upon receipt, aliquoting is necessary for mutiple use. Avoid repeated freeze-thaw cycles.

**Reconstitution** Please reconstitute protein indeionized sterile water to a concentration of 0.1-1.0 mg/mL. Aliquot for long-term storage at -80°C.

## GENE INFORMATION

**Gene Name** [PARP14 poly \(ADP-ribose\) polymerase family, member 14 \[ Homo sapiens \]](#)

**Official Symbol** [PARP14](#)

**Synonyms** PARP14; poly (ADP-ribose) polymerase family, member 14; poly [ADP-ribose] polymerase 14; KIAA1268; pART8; collaborator of STAT6; B-aggressive lymphoma 2; b aggressive lymphoma protein 2; BAL2; PARP-14;

**Gene ID** [54625](#)

**mRNA Refseq** [NM\\_017554](#)

**Protein Refseq** [NP\\_060024](#)

**MIM** [610028](#)

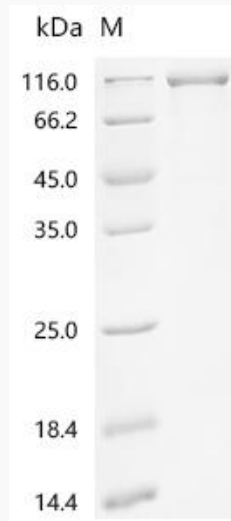
**UniProt ID** [Q460N5](#)

 Tel: 1-631-559-9269 1-516-512-3133

 Email: [info@creative-biomart.com](mailto:info@creative-biomart.com)  Fax: 1-631-938-8127

 45-1 Ramsey Road, Shirley, NY 11967, USA

**SDS-PAGE**



 Tel: 1-631-559-9269 1-516-512-3133

 Email: [info@creative-biomart.com](mailto:info@creative-biomart.com)  Fax: 1-631-938-8127

 45-1 Ramsey Road, Shirley, NY 11967, USA