

## Recombinant Human PARP2 Protein, GST-tagged

Cat. No. PARP2-006H Lot. No. (See product label)

### SPECIFICATION

**Product Overview** Active recombinant full length human PARP2 protein (2-583) with a N-terminal GST tag was expressed in insect cells.

**Species** Human

**Source** Insect Cells

**ProteinLength** 2-583

**Description** This gene encodes poly(ADP-ribosyl)transferase-like 2 protein, which contains a catalytic domain and is capable of catalyzing a poly(ADP-ribosylation) reaction. This protein has a catalytic domain which is homologous to that of poly (ADP-ribosyl) transferase, but lacks an N-terminal DNA binding domain which activates the C-terminal catalytic domain of poly (ADP-ribosyl) transferase. The basic residues within the N-terminal region of this protein may bear potential DNA-binding properties, and may be involved in the nuclear and/or nucleolar targeting of the protein. Two alternatively spliced transcript variants encoding distinct isoforms have been found.

**Molecular Mass** 95.5 kDa

**Purity** ≥50% estimated by SDS-PAGE

**Unit Definition** One unit of PARP incorporates 100 pmol of poly(ADP) in 1 minute from NAD into the acid-insoluble form.

 Tel: 1-631-559-9269 1-516-512-3133

 Email: [info@creative-biomart.com](mailto:info@creative-biomart.com)  Fax: 1-631-938-8127

 45-1 Ramsey Road, Shirley, NY 11967, USA

<b>Stability</b>	≥ 2 years
<b>Storage</b>	At -80 centigrade.
<b>Storage Buffer</b>	40 mM Tris-HCl, pH 8.0, with 110 mM sodium chloride, 2.2 mM potassium chloride, 16 mM glutathione, 20% glycerol, and 3 mM DTT

## GENE INFORMATION

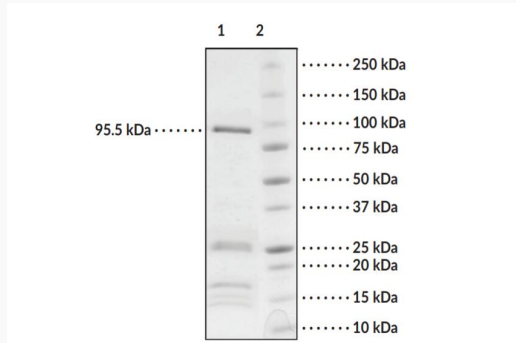
<b>Gene Name</b>	PARP2 poly(ADP-ribose) polymerase 2 [ Homo sapiens (human) ]
<b>Official Symbol</b>	PARP2
<b>Synonyms</b>	PARP2; poly(ADP-ribose) polymerase 2; ARTD2; ADPRT2; PARP-2; ADPRTL2; ADPRTL3; pADPRT-2; poly [ADP-ribose] polymerase 2; ADP-ribosyltransferase (NAD <sup>+</sup> ; poly(ADP-ribose) polymerase)-like 2; ADP-ribosyltransferase diphtheria toxin-like 2; ADPRT-2; DNA ADP-ribosyltransferase PARP2; NAD(+) ADP-ribosyltransferase 2; hPARP-2; poly (ADP-ribose) polymerase family, member 2; poly (ADP-ribosyl) transferase-like 2; poly[ADP-ribose] synthase 2; poly[ADP-ribose] synthetase 2; protein poly-ADP-ribosyltransferase PARP2; EC 2.4.2.30
<b>Gene ID</b>	10038
<b>mRNA Refseq</b>	NM_005484
<b>Protein Refseq</b>	NP_005475
<b>MIM</b>	607725
<b>UniProt ID</b>	Q9UGN5

 Tel: 1-631-559-9269 1-516-512-3133

 Email: [info@creative-biomart.com](mailto:info@creative-biomart.com)  Fax: 1-631-938-8127

 45-1 Ramsey Road, Shirley, NY 11967, USA

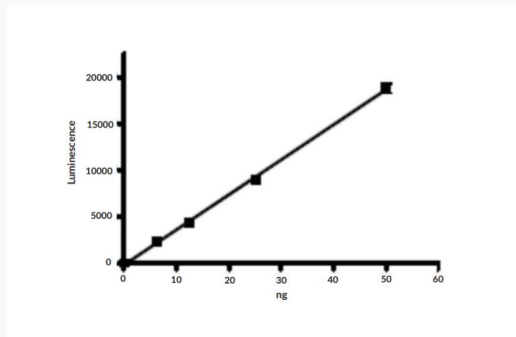
**SDS-PAGE analysis  
of PARP2**



Lane 1: PARP2

Lane 2: MW Markers

This protein has a calculated molecular weight of 95.5 kDa



 Tel: 1-631-559-9269 1-516-512-3133

 Email: [info@creative-biomart.com](mailto:info@creative-biomart.com)  Fax: 1-631-938-8127

 45-1 Ramsey Road, Shirley, NY 11967, USA