

Recombinant Human PARP2 protein, GST&His-tagged

Cat. No. PARP2-6754H Lot. No. (See product label)

SPECIFICATION

Product Overview	Recombinant Human PARP2 protein(Q9UGN5)(1-583aa), fused with N-terminal GST tag and C-terminal His tag, was expressed in Insect cells.
Species	Human
Source	Insect cells
ProteinLength	1-583aa
Tag	N-GST&C-His
Form	If the delivery form is liquid, the default storage buffer is Tris/PBS-based buffer, 5%-50% glycerol. If the delivery form is lyophilized powder, the buffer before lyophilization is Tris/PBS-based buffer, 6% Trehalose, pH 8.0.
Molecular Mass	92.8 kDa
Purity	Greater than 85% as determined by SDS-PAGE.
Storage	Store at -20°C/-80°C upon receipt, aliquoting is necessary for mutiple use. Avoid repeated freeze-thaw cycles.
Reconstitution	We recommend that this vial be briefly centrifuged prior to opening to bring the contents to the bottom. Please reconstitute protein in deionized sterile water to a concentration of 0.1-1.0 mg/mL. We recommend to add 5-50% of glycerol (final

 Tel: 1-631-559-9269 1-516-512-3133

 Email: info@creative-biomart.com  Fax: 1-631-938-8127

 45-1 Ramsey Road, Shirley, NY 11967, USA

concentration) and aliquot for long-term storage at -20°C/-80°C.

AA Sequence

MAARRRRSTGGGRARALNESKRVNNGNTAPEDSSPAKKTRRCQRQESKKMPVAG
 GKANKDRTEKQDGMPPGRSWASKRVSESVKALLLKGKAPVDPECTAKVGKAHVYC
 EGNDVYDVMLNQTNLQFNNNKYLIQLLEDDAQRNFSVWMRWGRVKGKMGQHSLV
 ACSGNLNKAKEIFQKKFLDKTKNNWEDREKFEKVPKGYDMLQMDYATNTQDEEET
 KKEESLKSPLKPESQLDLRVQELIKLICNVQAMEEMMEMKYNTKKAPLGKLTVAQI
 KAGYQSLKKIEDCIRAGQHGRALMEACNEFYTRIPHDFGLRTPPLIRTQKELSEKIQL
 LEALGDIEIAIKLVKTELQSPEHPLDQHYRNLHCALRPLDHESYEFKVISQYLQSTHAP
 THSDYTMTHLLDLFEVEKDGEKEAFREDLHNRMLLWHGSRMSNWVVGILSHGLRIAPP
 EAPITGYMFGKGIYFADMSSKSANYCFASRLKNTGLLLLSEVALGQCNELLEANPKA
 EGLLQGKHSTKGLGKMAPSSAHFVTLNGSTVPLGPASDTGILNPDGYTLNYNEYIVY
 NPNQVRMRYLLKVQFNFLQLW

GENE INFORMATION

Gene Name [PARP2 poly \(ADP-ribose\) polymerase 2 \[Homo sapiens \]](#)

Official Symbol [PARP2](#)

Synonyms

PARP2; poly (ADP-ribose) polymerase 2; ADP ribosyltransferase (NAD⁺; poly(ADP ribose) polymerase) like 2 , ADPRTL2, poly (ADP ribose) polymerase family, member 2; poly [ADP-ribose] polymerase 2; ADPRT-2; hPARP-2; poly(ADP-ribose) synthetase; poly[ADP-ribose] synthase 2; poly[ADP-ribose] synthetase 2; NAD(+) ADP-ribosyltransferase 2; poly (ADP-ribosyl) transferase-like 2; poly (ADP-ribose) polymerase family, member 2; ADP-ribosyltransferase (NAD⁺; poly(ADP-ribose) polymerase)-like 2; ADPRT2; PARP-2; ADPRTL2; ADPRTL3; pADPRT-2;

Gene ID [10038](#)

 Tel: 1-631-559-9269 1-516-512-3133

 Email: info@creative-biomart.com  Fax: 1-631-938-8127

 45-1 Ramsey Road, Shirley, NY 11967, USA

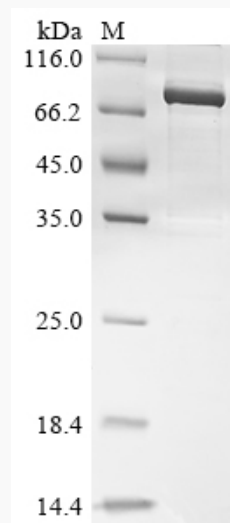
mRNA Refseq [NM_001042618](#)

Protein Refseq [NP_001036083](#)

MIM [607725](#)

UniProt ID [Q9UGN5](#)

SDS-PAGE



 Tel: 1-631-559-9269 1-516-512-3133

 Email: info@creative-biomart.com  Fax: 1-631-938-8127

 45-1 Ramsey Road, Shirley, NY 11967, USA