

Recombinant Human PARVA Protein (Met1-Glu372), C-His tagged

Cat. No. PARVA-4981H Lot. No. (See product label)

SPECIFICATION

Product Overview	Recombinant human PARVA (Met1-Glu372) fused with the C-terminal His tag was expressed in E. coli.
Species	Human
Source	E.coli
ProteinLength	Met1-Glu372
Form	Lyophilized powder/frozen liquid
Molecular Mass	40.92 kDa
Purity	>90% as determined by SDS-PAGE.
Notes	For research use only.
Storage	Use a manual defrost freezer and avoid repeated freeze thaw cycles. Store at 2 to 8 centigrade for one week. Store at -20 to -80 centigrade for twelve months from the date of receipt.
Storage Buffer	Supplied as solution form in PBS or lyophilized from PBS.
Reconstitution	Reconstitute in sterile water for a stock solution.

 Tel: 1-631-559-9269 1-516-512-3133

 Email: info@creative-biomart.com  Fax: 1-631-938-8127

 45-1 Ramsey Road, Shirley, NY 11967, USA

Shipping They are shipped out with dry ice/blue ice unless customers require otherwise.

GENE INFORMATION

Gene Name PARVA parvin, alpha [Homo sapiens (human)]

Official Symbol PARVA

Synonyms PARVA; parvin, alpha; matrix remodelling associated 2, MXRA2; alpha-parvin; FLJ10793; FLJ12254; actopaxin; matrix-remodeling-associated protein 2; calponin-like integrin-linked kinase-binding protein; MXRA2; CH-ILKBP; FLJ25106; FLJ46049;

Gene ID 55742

mRNA Refseq NM_018222

Protein Refseq NP_060692

MIM 608120

UniProt ID Q9NVD7

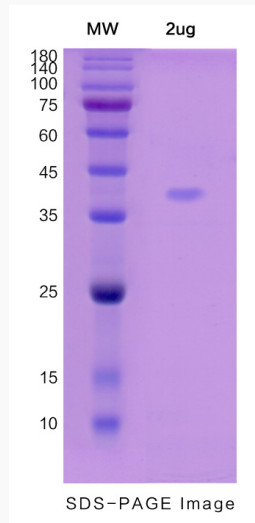
 Tel: 1-631-559-9269 1-516-512-3133

 Email: info@creative-biomart.com  Fax: 1-631-938-8127

 45-1 Ramsey Road, Shirley, NY 11967, USA



SDS-PAGE



Tel: 1-631-559-9269 1-516-512-3133

Email: info@creative-biomart.com Fax: 1-631-938-8127

45-1 Ramsey Road, Shirley, NY 11967, USA