

Recombinant Human PARVA Protein, Myc/DDK-tagged, C13 and N15-labeled

Cat. No. PARVA-5757H Lot. No. (See product label)

SPECIFICATION

Product Overview	PARVA MS Standard C13 and N15-labeled recombinant protein (NP_060692) with a C-terminal MYC/DDK tag, was expressed in HEK293 cells.
Species	Human
Source	HEK293
Description	This gene encodes a member of the parvin family of actin-binding proteins. Parvins are associated with focal contacts and contain calponin homology domains that bind to actin filaments. The encoded protein is part of the integrin-linked kinase signaling complex and plays a role in cell adhesion, motility and survival.
Molecular Mass	42.2 kDa
AA Sequence	MATSPQKSPSVPKSPTPKSPPSRKKDDSFGLGKLGGLARRKKAKEVSELQEEGMNA INLPLSPIPFELDPEDTMLEENEVRTMVDPNSRSDPKLQELMKVLDWINDVLVGERII VKDLAEDLYDGQVLQKLFKLESEKLNVAEVTQSEIAQKQKLQTVLEKINETLKLPPR SIKWNVDSVHAKSLVAILHLLVALSQYFRAPIRLPDHVSIQVVVVQKREGILQSRQIQE EITGNTEALSGRHERDAFDTLFDHAPDKLNVVKKTLITFVNKHLNKNLEVTELETQF ADGVYLVLLMGLLEGYFVPLHSFFLTPDSFEQKVLNVSF AFELMQDGGGLEKPKPRPE DIVNCDLKSTLRVLYNLFTKYRNVETRTRPLEQKLISEEDLAANDILDYKDDDDKV
Purity	> 80% as determined by SDS-PAGE and Coomassie blue staining

 Tel: 1-631-559-9269 1-516-512-3133

 Email: info@creative-biomart.com  Fax: 1-631-938-8127

 45-1 Ramsey Road, Shirley, NY 11967, USA

Stability	Stable for 3 months from receipt of products under proper storage and handling conditions.
Storage	Store at -80 centigrade. Avoid repeated freeze-thaw cycles.
Concentration	50 µg/mL as determined by BCA
Storage Buffer	100 mM glycine, 25 mM Tris-HCl, pH 7.3.

GENE INFORMATION

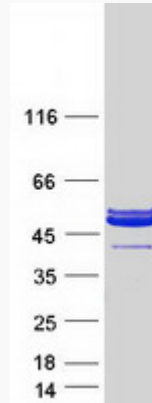
Gene Name	PARVA parvin alpha [Homo sapiens (human)]
Official Symbol	PARVA
Synonyms	PARVA; parvin, alpha; matrix remodelling associated 2, MXRA2; alpha-parvin; FLJ10793; FLJ12254; actopaxin; matrix-remodeling-associated protein 2; calponin-like integrin-linked kinase-binding protein; MXRA2; CH-ILKBP; FLJ25106; FLJ46049;
Gene ID	55742
mRNA Refseq	NM_018222
Protein Refseq	NP_060692
MIM	608120
UniProt ID	Q9NVD7

 Tel: 1-631-559-9269 1-516-512-3133

 Email: info@creative-biomart.com  Fax: 1-631-938-8127

 45-1 Ramsey Road, Shirley, NY 11967, USA

SDS-PAGE



 Tel: 1-631-559-9269 1-516-512-3133

 Email: info@creative-biomart.com  Fax: 1-631-938-8127

 45-1 Ramsey Road, Shirley, NY 11967, USA