

Recombinant Human PAX2 protein, GST-tagged

Cat. No. PAX2-1539H Lot. No. (See product label)

SPECIFICATION

Product Overview Recombinant Human PAX2 protein(145-432 aa), fused with N-terminal GST tag, was expressed in E. coli.

Species Human

Source E.coli

ProteinLength 145-432 aa

Tag N-GST

Form The purified protein was Lyophilized from sterile PBS (58mM Na₂HPO₄, 17mM NaH₂PO₄, 68mM NaCl, pH7.4). 5 % trehalose and 5 % mannitol are added as protectant before lyophilization.

Purity 85%, by SDS-PAGE with Coomassie Brilliant Blue staining.

Storage Short-term storage: Store at 2-8°C for (1-2 weeks). Long-term storage: Aliquot and store at -20°C to -80°C for up to 3 months, reconstitution with sterile water and addition of an equal volume of glycerol. Avoid repeat freeze-thaw cycles.

Reconstitution Reconstitute at 0.25 µg/µl in 200 µl sterile water for short-term storage. After reconstitution with sterile water, if glycerol has no effect on subsequent experiments, it is recommended to add an equal volume of glycerol for long-term storage.

 Tel: 1-631-559-9269 1-516-512-3133

 Email: info@creative-biomart.com  Fax: 1-631-938-8127

 45-1 Ramsey Road, Shirley, NY 11967, USA

AA Sequence

QPFHPTPDGAGTGV TAPGHTIVPSTASPPVSSASNDPVGSYSINGILGIPRSNGEKR
 KRDEVEVYTDPAHIRGGGGLHLVWTLRDVSEGSVPNGDSQSGVDSLRLKHLRADTF
 TQQQLEALDRVFERPSYPDV FQASEHIKSEQGNEYSLPALTPGLDEVKSSLSASTNP
 ELGSNVSGTQTYPVVTGRDMAS TTLPGYPPHVPTGQGSYPTSTLAGMVPGEFS
 GNPYSH PQYTAYNEAWRFSNP ALLMPPP GPPLPLLPLPMTATSYRGDHIK LQADSF
 GLHIVPV

GENE INFORMATION

Gene Name [PAX2 paired box 2 \[Homo sapiens \]](#)

Official Symbol [PAX2](#)

Synonyms [PAX2](#); paired box 2; paired box gene 2; paired box protein Pax-2; paired box homeotic gene 2;

Gene ID [5076](#)

mRNA Refseq [NM_000278](#)

Protein Refseq [NP_000269](#)

MIM [167409](#)

UniProt ID [Q02962](#)

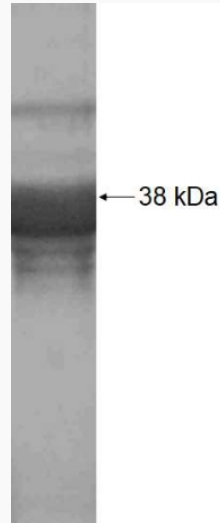
 Tel: 1-631-559-9269 1-516-512-3133

 Email: info@creative-biomart.com  Fax: 1-631-938-8127

 45-1 Ramsey Road, Shirley, NY 11967, USA



SDS-PAGE



Tel: 1-631-559-9269 1-516-512-3133

Email: info@creative-biomart.com Fax: 1-631-938-8127

45-1 Ramsey Road, Shirley, NY 11967, USA