

Recombinant Human PAX2 Protein, Myc/DDK-tagged, C13 and N15-labeled

Cat. No. PAX2-5570H **Lot. No.** (See product label)

SPECIFICATION

Product Overview	PAX2 MS Standard C13 and N15-labeled recombinant protein (NP_003978) with a C-terminal MYC/DDK tag, was expressed in HEK293 cells.
Species	Human
Source	HEK293
Description	PAX2 encodes paired box gene 2, one of many human homologues of the Drosophila melanogaster gene prd. The central feature of this transcription factor gene family is the conserved DNA-binding paired box domain. PAX2 is believed to be a target of transcriptional suppression by the tumor suppressor gene WT1. Mutations within PAX2 have been shown to result in optic nerve colobomas and renal hypoplasia. Alternative splicing of this gene results in multiple transcript variants.
Molecular Mass	44.5 kDa
AA Sequence	MDMHCKADPFSAMHPGHGGVNQLGGVFVNGRPLPDVVRQRIVELAHQGVRPCDIS RQLRVSHGCVSKILGRYYETGSIKPGVIGGSKPKVATPKVVDKIAEYKRQNPTMFAW EIRDRLAEGICDNDTVPSVSSINRIIRTKVQQPFHPTPDGAGTGVTAPGHTIVPSTAS PPVSSASNDPVGSYINGILGIPRSNGEKRRKRDVEVYTDPAHIRGGGGLHLVWTLR DVSEGSVPNGDSQSGVDSLRLKHLRADTFTQQQLEALDRVFERPSYPDVFQASEHIK SEQGNEYSLPALTPGLDEVKSSLSASTNPELGSNVSGTQTYPVVTGRDMASSTLPG YPPHVPPTGQGSYPTSTLAGMVPGSEFSGNPYSHPQYTAYNEAWRFSNPALLSSP

 Tel: 1-631-559-9269 1-516-512-3133

 Email: info@creative-biomart.com  Fax: 1-631-938-8127

 45-1 Ramsey Road, Shirley, NY 11967, USA



YYSSAAPRSAPAAAAAYDRHTRTRPLEQKLISEEDLAANDILDYKDDDDKV

Purity > 80% as determined by SDS-PAGE and Coomassie blue staining

Stability Stable for 3 months from receipt of products under proper storage and handling conditions.

Storage Store at -80 centigrade. Avoid repeated freeze-thaw cycles.

Concentration 50 µg/mL as determined by BCA

Storage Buffer 100 mM glycine, 25 mM Tris-HCl, pH 7.3.

GENE INFORMATION

Gene Name PAX2 paired box 2 [Homo sapiens (human)]

Official Symbol PAX2

Synonyms PAX2; paired box 2; paired box gene 2; paired box protein Pax-2; paired box homeotic gene 2;

Gene ID 5076

mRNA Refseq NM_003987

Protein Refseq NP_003978

MIM 167409

UniProt ID Q02962

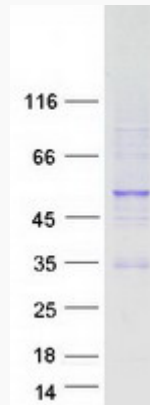
Tel: 1-631-559-9269 1-516-512-3133

Email: info@creative-biomart.com Fax: 1-631-938-8127

45-1 Ramsey Road, Shirley, NY 11967, USA



SDS-PAGE



Tel: 1-631-559-9269 1-516-512-3133

Email: info@creative-biomart.com Fax: 1-631-938-8127

45-1 Ramsey Road, Shirley, NY 11967, USA