

# Recombinant Human PAX2 Protein, Myc/DDK-tagged, C13 and N15-labeled

**Cat. No.** PAX2-5598H    **Lot. No.** (See product label)

## SPECIFICATION

<b>Product Overview</b>	PAX2 MS Standard C13 and N15-labeled recombinant protein (NP_000269) with a C-terminal MYC/DDK tag, was expressed in HEK293 cells.
<b>Species</b>	Human
<b>Source</b>	HEK293
<b>Description</b>	PAX2 encodes paired box gene 2, one of many human homologues of the Drosophila melanogaster gene <i>prd</i> . The central feature of this transcription factor gene family is the conserved DNA-binding paired box domain. PAX2 is believed to be a target of transcriptional suppression by the tumor suppressor gene WT1. Mutations within PAX2 have been shown to result in optic nerve colobomas and renal hypoplasia. Alternative splicing of this gene results in multiple transcript variants.
<b>Molecular Mass</b>	41.9 kDa
<b>AA Sequence</b>	MDMHCKADPFSAMHRHGGVNLGGVFNVRPLPDVVRQRIVELAHQGVPCDISR QLRVSHGCVSKILGRYYETGSIKPGVIGGSKPKVATPKVVDKIAEYKRQNPTMFAWEI RDRLLAEGICDNDTVPSVSSINRIIRTKVQQPFHPTPDGAGTGVTAPGHTIVPSTASP PVSSASNDPVGVSINGILGIPRSNGEKRRDEDVSEGSVPNGDSQSGVDSLRLKHL RADTFTQQQLEALDRVFERPSYPDFQASEHIKSEQGNEYSLPALTPGLDEVKSSLS ASTNPELGSNVSGTQTYPVVTGRDMASTTLPGYPPHVPTGQGSYPTSTLAGMVP GSEFSGNPYSHQPQYTAYNEAWRFSNPALLSSPYYYSAAPRGSAPAAAAAAYDRHT

 Tel: 1-631-559-9269    1-516-512-3133

 Email: [info@creative-biomart.com](mailto:info@creative-biomart.com)     Fax: 1-631-938-8127

 45-1 Ramsey Road, Shirley, NY 11967, USA



RTRPLEQKLISEEDLAANDILDYKDDDDKV

**Purity** > 80% as determined by SDS-PAGE and Coomassie blue staining

**Stability** Stable for 3 months from receipt of products under proper storage and handling conditions.

**Storage** Store at -80 centigrade. Avoid repeated freeze-thaw cycles.

**Concentration** 50 µg/mL as determined by BCA

**Storage Buffer** 100 mM glycine, 25 mM Tris-HCl, pH 7.3.

## GENE INFORMATION

**Gene Name** PAX2 paired box 2 [ Homo sapiens (human) ]

**Official Symbol** PAX2

**Synonyms** PAX2; paired box 2; paired box gene 2; paired box protein Pax-2; paired box homeotic gene 2;

**Gene ID** 5076

**mRNA Refseq** NM\_000278

**Protein Refseq** NP\_000269

**MIM** 167409

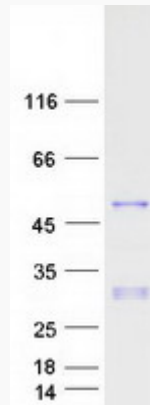
**UniProt ID** Q02962

Tel: 1-631-559-9269 1-516-512-3133

Email: [info@creative-biomart.com](mailto:info@creative-biomart.com) Fax: 1-631-938-8127

45-1 Ramsey Road, Shirley, NY 11967, USA

**SDS-PAGE**



 Tel: 1-631-559-9269 1-516-512-3133

 Email: [info@creative-biomart.com](mailto:info@creative-biomart.com)  Fax: 1-631-938-8127

 45-1 Ramsey Road, Shirley, NY 11967, USA