

## Recombinant Human PAX3 Protein, C-His tagged

Cat. No. PAX3-58H Lot. No. (See product label)

### SPECIFICATION

<b>Product Overview</b>	Recombinant Human PAX3 protein with C-His tag was expressed in E. coli.
<b>Species</b>	Human
<b>Source</b>	E.coli
<b>Description</b>	<p>This gene is a member of the paired box (PAX) family of transcription factors. Members of the PAX family typically contain a paired box domain and a paired-type homeodomain. These genes play critical roles during fetal development. Mutations in paired box gene 3 are associated with Waardenburg syndrome, craniofacial-deafness-hand syndrome, and alveolar rhabdomyosarcoma. The translocation t(2;13)(q35;q14), which represents a fusion between PAX3 and the forkhead gene, is a frequent finding in alveolar rhabdomyosarcoma. Alternative splicing results in transcripts encoding isoforms with different C-termini.</p>
<b>Molecular Mass</b>	54 kDa
<b>AA Sequence</b>	<p>MTTLAGAVPRMMRPGPGQNYPRSGFPLEVSTPLGQGRVNQLGGVFINGRPLPNHI  RHKIVEMAHHGIRPCVISRQLRVSHGCVSKILCRYQETGSIRPGAIGGSKPKQVTTTPD  VEKKIEEYKRENPGMFSWEIRDKLLKDAVCDRNTVPSVSSISRILRSKFGKGEEEEE  DLERKEAESEKKAKHSIDGILSERASAPQSDEGSDIDSEPDLPLKRKQRRSRTTFTA  EQLEELERAFERTHYPDIIYTREELAQRAKLTEARVQVWFSNRRARWRKQAGANQL  MAFNHLIPGGFPPTAMPTLPTYQLSETSYQPTSIPQAVSDPSSTVHRPQPLPPSTVH  QSTIPSNPDSSSAYCLPSTRHGFSSYTDSFVPPSGPSNPMNPTIGNGLSPQVMGLLT</p>

 Tel: 1-631-559-9269 1-516-512-3133

 Email: [info@creative-biomart.com](mailto:info@creative-biomart.com)  Fax: 1-631-938-8127

 45-1 Ramsey Road, Shirley, NY 11967, USA

NHGGVPHQPQTDYALSPLTGGLEPTTTVSASCSQRLDHMKSLDSLPTSQSYCPPTY  
STTGYSMDPVTGYQYGQYGQSKPWTFHHHHHHHH

**Purity** > 90% by SDS-PAGE

**Storage** Store it under sterile conditions at -20 to -80 centigrade. It is recommended that the protein be aliquoted for optimal storage. Avoid repeated freeze-thaw cycles.

**Concentration** 0.16 mg/mL

**Storage Buffer** 50mM Tris, 300mM NaCl, pH 7.0

## GENE INFORMATION

**Gene Name** [PAX3 paired box 3 \[ Homo sapiens \(human\) \]](#)

**Official Symbol** [PAX3](#)

**Synonyms** PAX3; paired box 3; paired box gene 3 (Waardenburg syndrome 1) , Waardenburg syndrome 1 , WS1; paired box protein Pax-3; HUP2; paired domain gene 3; paired domain gene HuP2; paired box homeotic gene 3; WS1; WS3; CDHS; MGC120381; MGC120382; MGC120383; MGC120384; MGC134778;

**Gene ID** [5077](#)

**mRNA Refseq** [NM\\_000438](#)

**Protein Refseq** [NP\\_000429](#)

**MIM** [606597](#)

 Tel: 1-631-559-9269 1-516-512-3133

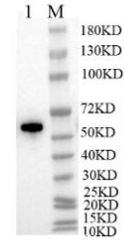
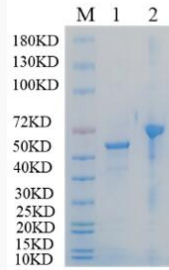
 Email: [info@creative-biomart.com](mailto:info@creative-biomart.com)  Fax: 1-631-938-8127

 45-1 Ramsey Road, Shirley, NY 11967, USA

UniProt ID

P23760

**Reducing 12% SDS-  
PAGE and WB  
analysis profile of  
purified PAX3**



1. PAX3
2. BSA

 Tel: 1-631-559-9269 1-516-512-3133

 Email: [info@creative-biomart.com](mailto:info@creative-biomart.com)  Fax: 1-631-938-8127

 45-1 Ramsey Road, Shirley, NY 11967, USA