

Recombinant Human PAX6 protein, His-tagged

Cat. No. PAX6-1884H **Lot. No.** (See product label)

SPECIFICATION

Product Overview	Recombinant Human PAX6 protein(126-229 aa), fused with N-terminal His tag, was expressed in E.coli.
Species	Human
Source	E.coli
ProteinLength	126-229 aa
Form	The purified protein was lyophilized from sterile phosphate-buffered saline (PBS: 58 mM Na ₂ HPO ₄ , 17 mM NaH ₂ PO ₄ , 68 mM NaCl, pH 7.4). Prior to lyophilization, 5% (w/v) trehalose and 5% (w/v) mannitol were incorporated as cryoprotective excipients. The protein was eluted with a buffer containing 300 mM imidazole.
AASequence	VLRNLASEKQQMGADGMYDKLRMLNGQTGSWGTRPGWYPGTSVPGQPTQDGCQ QQEGGGENTNSISSNGEDSDEAQMRLQLKRKLQRNRTSFTQEIQIEALEKEF
Purity	85%, by SDS-PAGE with Coomassie Brilliant Blue staining.
Storage	Store at 2-8°C for 1-2 weeks. Aliquot and store at -20°C to -80°C for up to 3 months, reconstitution with sterile water and addition of an equal volume of glycerol. Avoid repeat freeze-thaw cycles.
Reconstitution	Dissolve the product in 200 µl sterile water to achieve a working concentration of 0.25 g/

 Tel: 1-631-559-9269 1-516-512-3133

 Email: info@creative-biomart.com  Fax: 1-631-938-8127

 45-1 Ramsey Road, Shirley, NY 11967, USA

µl. If experimental compatibility allows, mix the aqueous solution with an equal volume of glycerol (1:1 ratio) after initial reconstitution.

GENE INFORMATION

Gene Name PAX6 paired box 6 [Homo sapiens]

Official Symbol PAX6

Synonyms PAX6; paired box 6; AN2, paired box gene 6 (aniridia, keratitis); paired box protein Pax-6; AN; aniridia; keratitis; D11S812E; WAGR; oculorhombin; aniridia type II protein; paired box homeotic gene-6; AN2; MGDA; MGC17209;

Gene ID 5080

mRNA Refseq NM_000280

Protein Refseq NP_000271

MIM 607108

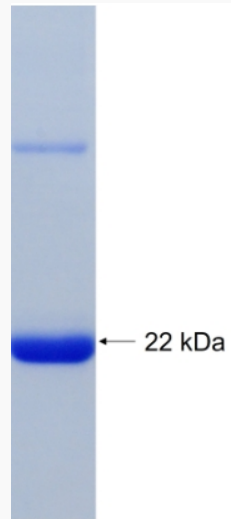
UniProt ID P26367

 Tel: 1-631-559-9269 1-516-512-3133

 Email: info@creative-biomart.com  Fax: 1-631-938-8127

 45-1 Ramsey Road, Shirley, NY 11967, USA

SDS-PAGE



 Tel: 1-631-559-9269 1-516-512-3133

 Email: info@creative-biomart.com  Fax: 1-631-938-8127

 45-1 Ramsey Road, Shirley, NY 11967, USA