

## Recombinant Human PAX6 protein(1-422aa), His-tagged

Cat. No. PAX6-8732H Lot. No. (See product label)

### SPECIFICATION

<b>Product Overview</b>	Recombinant Human PAX6 protein(P26367)(1-422aa), fused with N-terminal His tag, was expressed in E. coli.
<b>Species</b>	Human
<b>Source</b>	E.coli
<b>ProteinLength</b>	1-422aa
<b>Form</b>	If the delivery form is liquid, the default storage buffer is Tris/PBS-based buffer, 5%-50% glycerol. If the delivery form is lyophilized powder, the buffer before lyophilization is Tris/PBS-based buffer, 6% Trehalose, pH 8.0.
<b>Molecular Mass</b>	52.6 kDa
<b>Purity</b>	Greater than 85% as determined by SDS-PAGE.
<b>Storage</b>	Store at -20°C/-80°C upon receipt, aliquoting is necessary for mutiple use. Avoid repeated freeze-thaw cycles.
<b>Reconstitution</b>	We recommend that this vial be briefly centrifuged prior to opening to bring the contents to the bottom. Please reconstitute protein in deionized sterile water to a concentration of 0.1-1.0 mg/mL. We recommend to add 5-50% of glycerol (final concentration) and aliquot for long-term storage at -20°C/-80°C.

 Tel: 1-631-559-9269 1-516-512-3133

 Email: [info@creative-biomart.com](mailto:info@creative-biomart.com)  Fax: 1-631-938-8127

 45-1 Ramsey Road, Shirley, NY 11967, USA

**AA Sequence**

MQNSHSGVNLGGVFNVRPLPDSTRQKIVELAHSGARPCDISRILQVSNCGVSKIL  
 GRYYETGSIRPRAIGGSKPRVATPEVVS KIAQYKRECPSIFAWEIRDRLLESEGVC TND  
 NIPSVSSINRVLRLNLASEKQQMGADGMYDKLRMLNGQTGSWGTRPGWYPGTSVP  
 GQPTQDGCQQQEGGGENTNSISSNGEDSDEAQMRLQLKRKLQRNRTSFTQEQIEA  
 LEKEFERTHYPDV FARERLAAKIDLPEARIQVWFSNRRAKWRREEKLRNQRRQASN  
 TPSHIPSSSFSTSVYQPIQPQTPVSSFTSGSMLGRTDTALTNTYSALPPMPSFTMA  
 >NNLPMQPPVPSQTSSYSCMLPTSPSVNGRSYD TYTPPHMQTHMNSQPMGTSGTT  
 STGLISPGVSVPVQVPGSEPDMSQYW PRLQ

**GENE INFORMATION**

**Gene Name** [PAX6 paired box 6 \[ Homo sapiens \]](#)

**Official Symbol** [PAX6](#)

**Synonyms**

PAX6; paired box 6; AN2, paired box gene 6 (aniridia, keratitis); paired box protein  
 Pax-6; AN; aniridia; keratitis; D11S812E; WAGR; oculorhombin; aniridia type II  
 protein; paired box homeotic gene-6; AN2; MGDA; MGC17209;

**Gene ID** [5080](#)

**mRNA Refseq** [NM\\_000280](#)

**Protein Refseq** [NP\\_000271](#)

**MIM** [607108](#)

**UniProt ID** [P26367](#)

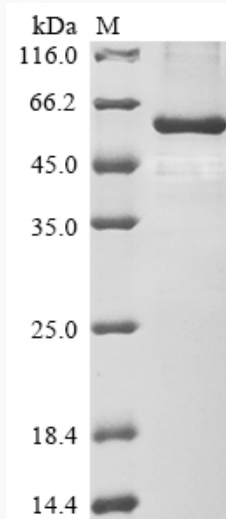
 Tel: 1-631-559-9269 1-516-512-3133

 Email: [info@creative-biomart.com](mailto:info@creative-biomart.com)  Fax: 1-631-938-8127

 45-1 Ramsey Road, Shirley, NY 11967, USA



SDS-PAGE



Tel: 1-631-559-9269 1-516-512-3133

Email: [info@creative-biomart.com](mailto:info@creative-biomart.com) Fax: 1-631-938-8127

45-1 Ramsey Road, Shirley, NY 11967, USA