

Recombinant Full Length Human PAX8 Protein, Flag tagged

Cat. No. PAX8-01H Lot. No. (See product label)

SPECIFICATION

Product Overview	Purified recombinant protein of Homo sapiens paired box 8 (PAX8), transcript variant PAX8D with Flag tag was expressed in HEK293.
Species	Human
Source	HEK293
ProteinLength	1-450 aa
Description	This gene encodes a member of the paired box (PAX) family of transcription factors. Members of this gene family typically encode proteins that contain a paired box domain, an octapeptide, and a paired-type homeodomain. This nuclear protein is involved in thyroid follicular cell development and expression of thyroid-specific genes. Mutations in this gene have been associated with thyroid dysgenesis, thyroid follicular carcinomas and atypical follicular thyroid adenomas. Alternatively spliced transcript variants encoding different isoforms have been described.
Form	25 mM Tris-HCl, 100 mM glycine, pH 7.3, 10 % glycerol
AASequence	MPHNSIRSGHGGLNQLGGAFVNGRPLPEVVQRIVDLAHQGVRPCDISRQLRVSHG CVSKILGRYYETGSIRPGVIGGSKPKVATPKVVEKIGDYKRQNPTMFAWEIRDLLAE GVCDNDTVPSVSSINRIIRTKVQQPFNLPMDSCVATKSLSPGHTLIPSSAVTPPESPQ SDSLGSTYSINGLLGIAQPGSDKRKMDSDQDSCRLSIDSQSSSSGPRKHLRTDAFS QHHLEPLECPFERQHYPEAYASPSHTKGEQGERWWGPRCPDTHPTSPPADRAAM PPLPSQAWWQEVNTLAMPMATPPTPPTARPGASPTPACTRTRPLEQKLISEEDLAA

 Tel: 1-631-559-9269 1-516-512-3133

 Email: info@creative-biomart.com  Fax: 1-631-938-8127

 45-1 Ramsey Road, Shirley, NY 11967, USA

	NDILDYKDDDDKV
Purity	> 80 % as determined by SDS-PAGE and Coomassie blue staining
Notes	For testing in cell culture applications, please filter before use. Note that you may experience some loss of protein during the filtration process.
Storage	Store at -80 centigrade. Stable for 12 months from the date of receipt of the product under proper storage and handling conditions. Avoid repeated freeze-thaw cycles.
Concentration	> 0.05 µg/µL as determined by microplate BCA method
Shipping	Dry Ice

GENE INFORMATION

Gene Name	PAX8 paired box 8 [Homo sapiens (human)]
Official Symbol	PAX8
Synonyms	PAX8; paired box 8; paired box gene 8; paired box protein Pax-8; paired domain gene 8
Gene ID	7849
mRNA Refseq	NM_013953
Protein Refseq	NP_039247
MIM	167415

 Tel: 1-631-559-9269 1-516-512-3133

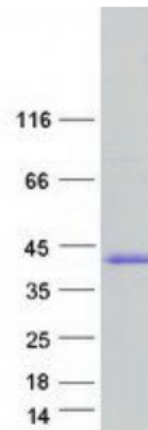
 Email: info@creative-biomart.com  Fax: 1-631-938-8127

 45-1 Ramsey Road, Shirley, NY 11967, USA

UniProt ID

Q06710

SDS-PAGE



 Tel: 1-631-559-9269 1-516-512-3133

 Email: info@creative-biomart.com  Fax: 1-631-938-8127

 45-1 Ramsey Road, Shirley, NY 11967, USA