

Recombinant Full Length Human PAX8 Protein, C-DDK tagged

Cat. No. PAX8-02H Lot. No. (See product label)

SPECIFICATION

Product Overview	Recombinant protein of human paired box 8 (PAX8), transcript variant PAX8A with a C-Myc/DDK tag was expressed in HEK293T.
Species	Human
Source	HEK293
Description	This gene encodes a member of the paired box (PAX) family of transcription factors. Members of this gene family typically encode proteins that contain a paired box domain, an octapeptide, and a paired-type homeodomain. This nuclear protein is involved in thyroid follicular cell development and expression of thyroid-specific genes. Mutations in this gene have been associated with thyroid dysgenesis, thyroid follicular carcinomas and atypical follicular thyroid adenomas. Alternatively spliced transcript variants encoding different isoforms have been described.
Molecular Mass	48 kDa
AA Sequence	MPHNSIRSGHGGLNQLGGAFVNGRPLPEVVRQRIVDLAHQGVRPCDISRQLRVSHG CVSKILGRYYETGSIRPGVIGGSKPKVATPKVVEKIGDYKRQNPTMFAWEIRDLLAE GVCDNDTVPSVSSINRIIRTKVQQPFNLPMDSCVATKSLSPGHTLIPSSAVTPPEPQ SDSLGSTYSINGLLGIAQPGSDKRKMDDSDQDSCRLSIDSQSSSSGPRKHLRTDAFS QHHLEPLECPFERQHYPEAYASPSHTKGEQGLYPLLLNSTLDDGKATLTPSNTPLG RNLSTHQYTPVADPHSPFAIKQETPEVSSSSSTPSSLSSSAFLDLQQVGSVPPFN AFPHAASVYGQFTGQALLSGREMGPTLPGYPPHIPTSGQGSYASSAIGMVAGSE

 Tel: 1-631-559-9269 1-516-512-3133

 Email: info@creative-biomart.com  Fax: 1-631-938-8127

 45-1 Ramsey Road, Shirley, NY 11967, USA

YSGNAYGHTPYSSYSEAWRFPNSSLLSSPYYSSTSRPSAPPTTATAFDHLTRTRP
LEQKLISEEDLAANDILDYKDDDDKV

Purity > 80% as determined by SDS-PAGE and Coomassie blue staining

Applications Cell culture: For culture applications, please filter before use. Note that you may experience some loss of protein during the filtration process.

Stability Stable for 12 months from the date of receipt of the product under proper storage and handling conditions. Avoid repeated freeze-thaw cycles.

Storage Store at -80 centigrade.

Concentration >50 µg/mL as determined by microplate BCA method

Storage Buffer 25 mM Tris.HCl, pH 7.3, 100 mM glycine, 10% glycerol

GENE INFORMATION

Gene Name PAX8 paired box 8 [Homo sapiens (human)]

Official Symbol PAX8

Synonyms PAX8; paired box 8; PAX-8; paired box protein Pax-8; paired domain gene 8

Gene ID 7849

mRNA Refseq NM_003466

Protein Refseq NP_003457

 Tel: 1-631-559-9269 1-516-512-3133

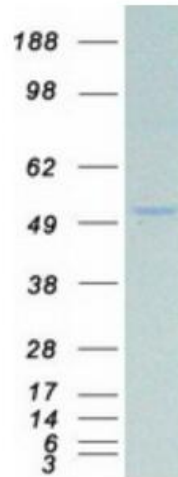
 Email: info@creative-biomart.com  Fax: 1-631-938-8127

 45-1 Ramsey Road, Shirley, NY 11967, USA

MIM 167415

UniProt ID Q06710

SDS-PAGE



 Tel: 1-631-559-9269 1-516-512-3133

 Email: info@creative-biomart.com  Fax: 1-631-938-8127

 45-1 Ramsey Road, Shirley, NY 11967, USA