

# Recombinant Human PAX8 Protein, Myc/DDK-tagged, C13 and N15-labeled

**Cat. No.** PAX8-2313H    **Lot. No.** (See product label)

## SPECIFICATION

### Product Overview

PAX8 MS Standard C13 and N15-labeled recombinant protein (NP\_054698) with a C-terminal MYC/DDK tag, was expressed in HEK293 cells.

### Species

Human

### Source

HEK293

### Description

This gene encodes a member of the paired box (PAX) family of transcription factors. Members of this gene family typically encode proteins that contain a paired box domain, an octapeptide, and a paired-type homeodomain. This nuclear protein is involved in thyroid follicular cell development and expression of thyroid-specific genes. Mutations in this gene have been associated with thyroid dysgenesis, thyroid follicular carcinomas and atypical follicular thyroid adenomas. Alternatively spliced transcript variants encoding different isoforms have been described.

### Molecular Mass

30.9 kDa

### AA Sequence

MPHNSIRSGHGGLNQLGGAFVNGRPLPEVVQRIVDLAHQGVRPCDISRQLRVSHG  
CVSKILGRYYETGSIRPGVIGGSKPKVATPKVVEKIGDYKRQNPTMFAWEIRDLLAE  
GVCDNDTVPSVSSINRIIRTKVQQPFNLPMDCSVATKSLSPGHTLIPSSAVTPPESPQ  
SDSLGSTYSINGLLGIAQPGSDKRKMDDSDQDSCRLSIDSQSSSSGPRKHLRDTAFS  
QHHLEPLECPFERQHYPEAYASPSHTKGEQEVNTLAMPMATPPTPPTARPGASPTP  
ACTRTRPLEQKLISEEDLAANDILDYKDDDDKV

 Tel: 1-631-559-9269    1-516-512-3133

 Email: [info@creative-biomart.com](mailto:info@creative-biomart.com)     Fax: 1-631-938-8127

 45-1 Ramsey Road, Shirley, NY 11967, USA



<b>Purity</b>	> 80% as determined by SDS-PAGE and Coomassie blue staining
<b>Stability</b>	Stable for 3 months from receipt of products under proper storage and handling conditions.
<b>Storage</b>	Store at -80 centigrade. Avoid repeated freeze-thaw cycles.
<b>Concentration</b>	50 µg/mL as determined by BCA
<b>Storage Buffer</b>	100 mM glycine, 25 mM Tris-HCl, pH 7.3.

## GENE INFORMATION

<b>Gene Name</b>	PAX8 paired box 8 [ Homo sapiens (human) ]
<b>Official Symbol</b>	PAX8
<b>Synonyms</b>	PAX8; paired box 8; paired box gene 8; paired box protein Pax-8; paired domain gene 8;
<b>Gene ID</b>	7849
<b>mRNA Refseq</b>	NM_013992
<b>Protein Refseq</b>	NP_054698
<b>MIM</b>	167415
<b>UniProt ID</b>	Q06710

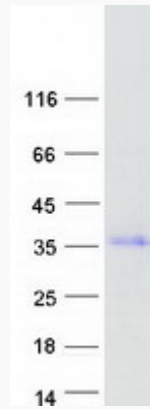
Tel: 1-631-559-9269 1-516-512-3133

Email: [info@creative-biomart.com](mailto:info@creative-biomart.com) Fax: 1-631-938-8127

45-1 Ramsey Road, Shirley, NY 11967, USA



**SDS-PAGE**



☎ Tel: 1-631-559-9269 1-516-512-3133

☎ Email: [info@creative-biomart.com](mailto:info@creative-biomart.com) ☎ Fax: 1-631-938-8127

☎ 45-1 Ramsey Road, Shirley, NY 11967, USA