

Recombinant Human PAX8 Protein, C-His tagged

Cat. No. PAX8-59H Lot. No. (See product label)

SPECIFICATION

Product Overview	Recombinant Human PAX8 protein with C-His tag was expressed in E. coli.
Species	Human
Source	E.coli
ProteinLength	1-450 aa
Description	This gene encodes a member of the paired box (PAX) family of transcription factors. Members of this gene family typically encode proteins that contain a paired box domain, an octapeptide, and a paired-type homeodomain. This nuclear protein is involved in thyroid follicular cell development and expression of thyroid-specific genes. Mutations in this gene have been associated with thyroid dysgenesis, thyroid follicular carcinomas and atypical follicular thyroid adenomas. Alternatively spliced transcript variants encoding different isoforms have been described.
Molecular Mass	49 kDa
AA Sequence	MPHNSIRSGHGGLNQLGGAFVNGRPLPEVVRQRIVDLAHQGVRPCDISRQLRVSHG CVSKILGRYYETGSIRPGVIGGSKPKVATPKVVEKIGDYKRQNPTMFAWEIRDLLAE GVCDNDTVPSVSSINRIIRTKVQQPFNLPMDSCVATKSLSPGHTLIPSSAVTPPESPQ SDSLGSTYSINGLLGIAQPGSDKRKMDDSDQDSCRLSIDSQSSSSGPRKHLRTDAFS QHHLEPLECPFERQHYPEAYASPSHTKGEQGLYPLLNSTLDDGKATLTPSNTPLG RNLSTHQITYPVVADPHSPFAIKQETPEVSSSSSTPSSLSSAFLDLQQVGSVPPFN AFPHAASVYGQFTGQALLSGREMGPTLPGYPPHIPTSGQGSYASSAIAAGMVAGSE

 Tel: 1-631-559-9269 1-516-512-3133

 Email: info@creative-biomart.com  Fax: 1-631-938-8127

 45-1 Ramsey Road, Shirley, NY 11967, USA

YSGNAYGHTPYSSYSEAWRFPNSSLLSSPYYSSTSRPSAPPTTATAFDHLHHHHH
HHH

Purity > 90% by SDS-PAGE

Storage Store it under sterile conditions at -20 to -80 centigrade. It is recommended that the protein be aliquoted for optimal storage. Avoid repeated freeze-thaw cycles.

Concentration 0.22 mg/mL

Storage Buffer 20mM PB, 200mM NaCl, pH 6.0, 10% Glycerol, 1% SKL

GENE INFORMATION

Gene Name PAX8 paired box 8 [Homo sapiens (human)]

Official Symbol PAX8

Synonyms PAX8; paired box 8; paired box gene 8; paired box protein Pax-8; paired domain gene 8;

Gene ID 7849

mRNA Refseq NM_003466

Protein Refseq NP_003457

MIM 167415

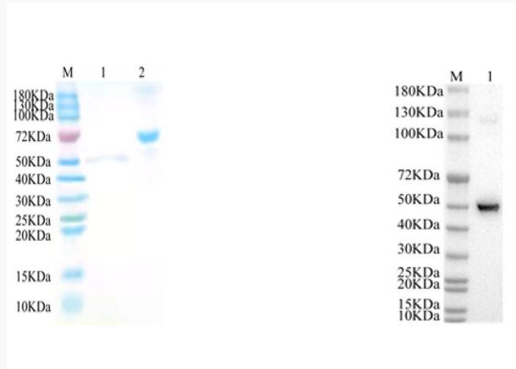
UniProt ID Q06710

 Tel: 1-631-559-9269 1-516-512-3133

 Email: info@creative-biomart.com  Fax: 1-631-938-8127

 45-1 Ramsey Road, Shirley, NY 11967, USA

**Reducing 12% SDS-
PAGE and WB
analysis profile of
purified PAX8**



1. PAX8
2. BSA

 Tel: 1-631-559-9269 1-516-512-3133

 Email: info@creative-biomart.com  Fax: 1-631-938-8127

 45-1 Ramsey Road, Shirley, NY 11967, USA