

Recombinant Human PAX8 Protein, Myc/DDK-tagged, C13 and N15-labeled

Cat. No. PAX8-6665H **Lot. No.** (See product label)

SPECIFICATION

Product Overview	PAX8 MS Standard C13 and N15-labeled recombinant protein (NP_039247) with a C-terminal MYC/DDK tag, was expressed in HEK293 cells.
Species	Human
Source	HEK293
Description	This gene encodes a member of the paired box (PAX) family of transcription factors. Members of this gene family typically encode proteins that contain a paired box domain, an octapeptide, and a paired-type homeodomain. This nuclear protein is involved in thyroid follicular cell development and expression of thyroid-specific genes. Mutations in this gene have been associated with thyroid dysgenesis, thyroid follicular carcinomas and atypical follicular thyroid adenomas. Alternatively spliced transcript variants encoding different isoforms have been described.
Molecular Mass	34.7 kDa
AA Sequence	MPHNSIRSGHGGLNQLGGAFVNGRPLPEVVQRIVDLAHQGVRPCDISRQLRVSHG CVSKILGRYYETGSIRPGVIGGSKPKVATPKVVEKIGDYKRQNPTMFAWEIRDLLAE GVCDNDTVPSVSSINRIIRTKVQQPFNLPMDCSVATKSLSPGHTLIPSSAVTPPESPQ SDSLGSTYSINGLLGIAQPGSDKRKMDDSDQDSCRLSIDSQSSSSGPRKHLRTDAFS QHHLEPLECPFERQHYPEAYASPSHTKGEQGERWWGPRCPDTHPTSPPADRAAM PPLPSQAWWQEVNTLAMPMATPPTPPTARPGASPTPACTRTRPLEQKLISEEDLAA

 Tel: 1-631-559-9269 1-516-512-3133

 Email: info@creative-biomart.com  Fax: 1-631-938-8127

 45-1 Ramsey Road, Shirley, NY 11967, USA



NDILDYKDDDDKV

Purity > 80% as determined by SDS-PAGE and Coomassie blue staining

Stability Stable for 3 months from receipt of products under proper storage and handling conditions.

Storage Store at -80 centigrade. Avoid repeated freeze-thaw cycles.

Concentration 50 µg/mL as determined by BCA

Storage Buffer 100 mM glycine, 25 mM Tris-HCl, pH 7.3.

GENE INFORMATION

Gene Name PAX8 paired box 8 [Homo sapiens (human)]

Official Symbol PAX8

Synonyms PAX8; paired box 8; paired box gene 8; paired box protein Pax-8; paired domain gene 8;

Gene ID 7849

mRNA Refseq NM_013953

Protein Refseq NP_039247

MIM 167415

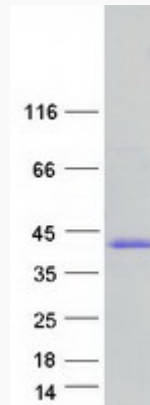
UniProt ID Q06710

Tel: 1-631-559-9269 1-516-512-3133

Email: info@creative-biomart.com Fax: 1-631-938-8127

45-1 Ramsey Road, Shirley, NY 11967, USA

SDS-PAGE



 Tel: 1-631-559-9269 1-516-512-3133

 Email: info@creative-biomart.com  Fax: 1-631-938-8127

 45-1 Ramsey Road, Shirley, NY 11967, USA