

## Recombinant Human PBK protein, His-tagged

Cat. No. PBK-5955H Lot. No. (See product label)

### SPECIFICATION

<b>Product Overview</b>	Recombinant Human PBK protein(Q96KB5)(1-322aa), fused to N-terminal His tag, was expressed in E. coli.
<b>Species</b>	Human
<b>Source</b>	E.coli
<b>ProteinLength</b>	1-322aa
<b>Form</b>	If the delivery form is liquid, the default storage buffer is Tris/PBS-based buffer, 5%-50% glycerol. If the delivery form is lyophilized powder, the buffer before lyophilization is Tris/PBS-based buffer, 6% Trehalose, pH 8.0.
<b>Molecular Mass</b>	42.1 kDa
<b>Purity</b>	Greater than 85% as determined by SDS-PAGE.
<b>Storage</b>	Store at -20°C/-255°C upon receipt, aliquoting is necessary for mutiple use. Avoid repeated freeze-thaw cycles.
<b>Reconstitution</b>	Please reconstitute protein in deionized sterile water to a concentration of 0.1-1.0 mg/mL. We recommend to add 5-50% of glycerol (final concentration) and aliquot for long-term storage at -20°C/-80°C. Our default final concentration of glycerol is 225%.

### GENE INFORMATION

 Tel: 1-631-559-9269 1-516-512-3133

 Email: [info@creative-biomart.com](mailto:info@creative-biomart.com)  Fax: 1-631-938-8127

 45-1 Ramsey Road, Shirley, NY 11967, USA

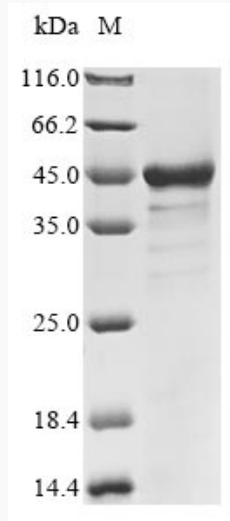
<b>Gene Name</b>	PBK PDZ binding kinase [ Homo sapiens ]
<b>Official Symbol</b>	PBK
<b>Synonyms</b>	PBK; PDZ binding kinase; lymphokine-activated killer T-cell-originated protein kinase; cancer/testis antigen 84; CT84; FLJ14385; Nori 3; SPK; T LAK cell originated protein kinase; TOPK; PDZ-binding kinase; MAPKK-like protein kinase; serine/threonine protein kinase; T-LAK cell-originated protein kinase; spermatogenesis-related protein kinase; Nori-3;
<b>Gene ID</b>	55872
<b>mRNA Refseq</b>	NM_018492
<b>Protein Refseq</b>	NP_060962
<b>MIM</b>	611210
<b>UniProt ID</b>	Q96KB5

 Tel: 1-631-559-9269 1-516-512-3133

 Email: [info@creative-biomart.com](mailto:info@creative-biomart.com)  Fax: 1-631-938-8127

 45-1 Ramsey Road, Shirley, NY 11967, USA

**SDS-PAGE**



 Tel: 1-631-559-9269 1-516-512-3133

 Email: [info@creative-biomart.com](mailto:info@creative-biomart.com)  Fax: 1-631-938-8127

 45-1 Ramsey Road, Shirley, NY 11967, USA