

# Recombinant Full Length Human PBX homeobox 1 Protein, Flag tagged

Cat. No. PBX1-14HFL Lot. No. (See product label)

## SPECIFICATION

<b>Product Overview</b>	Recombinant protein of human pre-B-cell leukemia homeobox 1 (PBX1) with C-Flag tag was expressed in HEK293T.
<b>Species</b>	Human
<b>Source</b>	HEK293
<b>ProteinLength</b>	1-430 aa
<b>Description</b>	<p>This gene encodes a nuclear protein that belongs to the PBX homeobox family of transcriptional factors. Studies in mice suggest that this gene may be involved in the regulation of osteogenesis and required for skeletal patterning and programming. A chromosomal translocation, t(1;19) involving this gene and TCF3/E2A gene, is associated with pre-B-cell acute lymphoblastic leukemia. The resulting fusion protein, in which the DNA binding domain of E2A is replaced by the DNA binding domain of this protein, transforms cells by constitutively activating transcription of genes regulated by the PBX protein family. Alternatively spliced transcript variants encoding different isoforms have been found for this gene.</p>
<b>Tag</b>	C-Flag
<b>Molecular Mass</b>	46.4 kDa
<b>AA Sequence</b>	MDEQPRLMHSAGVGMAGHPGLSQHLQDGAGGTEGEGGRKQDIGDILQQIMTITD

 Tel: 1-631-559-9269 1-516-512-3133

 Email: [info@creative-biomart.com](mailto:info@creative-biomart.com)  Fax: 1-631-938-8127

 45-1 Ramsey Road, Shirley, NY 11967, USA

QSLDEAQARKHALNCHRMKPALFNVLCEIKEKTVLSIRGAQEEEEPTDPQLMRLDNML  
 LAEGVAGPEKGGGSAAAAAAAAAASGGAGSDNSVEHSDYRAKLSQIRQIYHTELEKY  
 EQACNEFTTHVMNLLREQSRTRPISPKEIERMVSIIHRKFSSIQMQLKQSTCEAVMIL  
 RSRFLDARRKRRNFNKQATEILNEYFYSHLSNPYPSEEAKEELAKKCGITVSQVSNW  
 FGNKRIRYKKNIGKFQEEANIYAAKTAVTATNVSAHGSQANSPTPNSAGSSSSSFNM  
 SNSGDLFMSVQSLNGDSYQGAQVGANVQSQVDTLRHVISQTGGYSGLAASQMY  
 SPQGISANGGWQDATTTPSSVTSPTEGPGSVHSDTSNTRTRPLEQKLISEEDLAANDI  
 LDYKDDDDKV

<b>Purity</b>	> 80% as determined by SDS-PAGE and Coomassie blue staining
<b>Notes</b>	For testing in cell culture applications, please filter before use. Note that you may experience some loss of protein during the filtration process.
<b>Stability</b>	Stable for 12 months from the date of receipt of the product under proper storage and handling conditions. Avoid repeated freeze-thaw cycles.
<b>Storage</b>	Store at -80 centigrade.
<b>Storage Buffer</b>	25 mM Tris-HCl, 100 mM glycine, pH 7.3, 10% glycerol
<b>Concentration</b>	> 0.05 µg/µL as determined by microplate BCA method

## GENE INFORMATION

<b>Gene Name</b>	PBX1 PBX homeobox 1 [ Homo sapiens (human) ]
<b>Official Symbol</b>	PBX1
<b>Synonyms</b>	PBX1; PBX homeobox 1; CAKUHEP; pre-B-cell leukemia transcription factor 1; homeobox protein PBX1; homeobox protein PRL; pre-B-cell leukemia homeobox 1

 Tel: 1-631-559-9269 1-516-512-3133

 Email: [info@creative-biomart.com](mailto:info@creative-biomart.com)  Fax: 1-631-938-8127

 45-1 Ramsey Road, Shirley, NY 11967, USA

**Gene ID** 5087

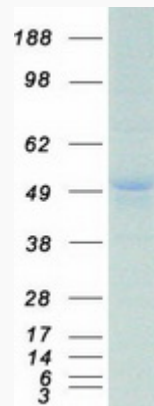
**mRNA Refseq** NM\_002585

**Protein Refseq** NP\_002576

**MIM** 176310

**UniProt ID** P40424

**SDS-PAGE**



 Tel: 1-631-559-9269 1-516-512-3133

 Email: [info@creative-biomart.com](mailto:info@creative-biomart.com)  Fax: 1-631-938-8127

 45-1 Ramsey Road, Shirley, NY 11967, USA