

## Recombinant Human PBX1 protein, GST-tagged

Cat. No. PBX1-2499H Lot. No. (See product label)

### SPECIFICATION

<b>Product Overview</b>	Recombinant Human PBX1 protein(304-353 aa), fused with N-terminal GST tag, was expressed in E. coli.
<b>Species</b>	Human
<b>Source</b>	E.coli
<b>ProteinLength</b>	304-353 aa
<b>Tag</b>	N-GST
<b>Form</b>	The purified protein was Lyophilized from sterile PBS (58mM Na <sub>2</sub> HPO <sub>4</sub> , 17mM NaH <sub>2</sub> PO <sub>4</sub> , 68mM NaCl, pH7.4). 5 % trehalose and 5 % mannitol are added as protectant before lyophilization.
<b>Purity</b>	90%, by SDS-PAGE with Coomassie Brilliant Blue staining.
<b>Storage</b>	Short-term storage: Store at 2-8°C for (1-2 weeks). Long-term storage: Aliquot and store at -20°C to -80°C for up to 3 months, reconstitution with sterile water and addition of an equal volume of glycerol. Avoid repeat freeze-thaw cycles.
<b>Reconstitution</b>	Reconstitute at 0.25 µg/µl in 200 µl sterile water for short-term storage. After reconstitution with sterile water, if glycerol has no effect on subsequent experiments, it is recommended to add an equal volume of glycerol for long-term

 Tel: 1-631-559-9269 1-516-512-3133

 Email: [info@creative-biomart.com](mailto:info@creative-biomart.com)  Fax: 1-631-938-8127

 45-1 Ramsey Road, Shirley, NY 11967, USA

storage.

**AA Sequence**

IYAAKTAVTATNVSAHGSQLNSPSTPNSAGSSSSFNMSNSGDLFMSVQSL

## GENE INFORMATION

**Gene Name**

PBX1 pre-B-cell leukemia homeobox 1 [ Homo sapiens ]

**Official Symbol**

PBX1

**Synonyms**

PBX1; pre-B-cell leukemia homeobox 1; pre B cell leukemia transcription factor 1; pre-B-cell leukemia transcription factor 1; homeobox protein PRL; homeobox protein PBX1; MGC126627; DKFZp686B09108;

**Gene ID**

5087

**mRNA Refseq**

NM\_001204961

**Protein Refseq**

NP\_001191890

**MIM**

176310

**UniProt ID**

P40424

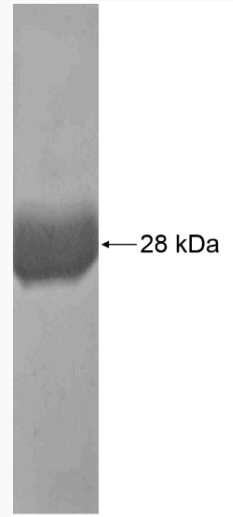
 Tel: 1-631-559-9269 1-516-512-3133

 Email: [info@creative-biomart.com](mailto:info@creative-biomart.com)  Fax: 1-631-938-8127

 45-1 Ramsey Road, Shirley, NY 11967, USA



**SDS-PAGE**



☎ Tel: 1-631-559-9269 1-516-512-3133

☎ Email: [info@creative-biomart.com](mailto:info@creative-biomart.com) ☎ Fax: 1-631-938-8127

☎ 45-1 Ramsey Road, Shirley, NY 11967, USA