

Recombinant Human PBX1 Protein, Myc/DDK-tagged, C13 and N15-labeled

Cat. No. PBX1-2878H **Lot. No.** (See product label)

SPECIFICATION

Product Overview	PBX1 MS Standard C13 and N15-labeled recombinant protein (NP_002576) with a C-terminal MYC/DDK tag, was expressed in HEK293 cells.
Species	Human
Source	HEK293
Description	This gene encodes a nuclear protein that belongs to the PBX homeobox family of transcriptional factors. Studies in mice suggest that this gene may be involved in the regulation of osteogenesis and required for skeletal patterning and programming. A chromosomal translocation, t(1;19) involving this gene and TCF3/E2A gene, is associated with pre-B-cell acute lymphoblastic leukemia. The resulting fusion protein, in which the DNA binding domain of E2A is replaced by the DNA binding domain of this protein, transforms cells by constitutively activating transcription of genes regulated by the PBX protein family. Alternatively spliced transcript variants encoding different isoforms have been found for this gene.
Molecular Mass	46.6 kDa
AA Sequence	MDEQPRLMHSAGVGMAGHPGLSQHLQDGAGGTEGEGGRKQDIGDILQQIMTITD QSLDEAQARKHALNCHRMKPALFNVLCEIKEKTVLSIRGAQEEEEPTDPQLMRDLNML LAEGVAGPEKGGGSAAAAAAAAAASGGAGSDNSVEHSDYRAKLSQIRQIYHTELEKY EQACNEFTTHVMNLLREQSRTRPISPKEIERMVSIIHRKFSSIQMQLKQSTCEAVMIL

 Tel: 1-631-559-9269 1-516-512-3133

 Email: info@creative-biomart.com  Fax: 1-631-938-8127

 45-1 Ramsey Road, Shirley, NY 11967, USA

RSRFLDARRKRRNFNKQATEILNEYFYSHLSNPYPSEEAKEELAKKCGITVSQVSNW
 FGNKRIRYKKNIGKFQEEANIYAAKTAVTATNVSAHGSQANSPSTPNSAGSSSSFNM
 SNSGDLFMSVQSLNGDSYQGAQVGANVQSQVDTLRHVISQTGGYSDGLAASQMY
 SPQGISANGGWQDATTTPSSVTSPTEGPGSVHSDTSNTRTRPLEQKLISEEDLAANDI
 LDYKDDDDKV

Purity > 80% as determined by SDS-PAGE and Coomassie blue staining

Stability Stable for 3 months from receipt of products under proper storage and handling conditions.

Storage Store at -80 centigrade. Avoid repeated freeze-thaw cycles.

Concentration 50 µg/mL as determined by BCA

Storage Buffer 100 mM glycine, 25 mM Tris-HCl, pH 7.3.

GENE INFORMATION

Gene Name PBX1 pre-B-cell leukemia homeobox 1 [Homo sapiens (human)]

Official Symbol PBX1

Synonyms PBX1; pre-B-cell leukemia homeobox 1; pre B cell leukemia transcription factor 1; pre-B-cell leukemia transcription factor 1; homeobox protein PRL; homeobox protein PBX1; MGC126627; DKFZp686B09108;

Gene ID 5087

mRNA Refseq NM_002585

 Tel: 1-631-559-9269 1-516-512-3133

 Email: info@creative-biomart.com  Fax: 1-631-938-8127

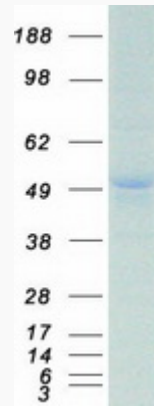
 45-1 Ramsey Road, Shirley, NY 11967, USA

Protein Refseq NP_002576

MIM 176310

UniProt ID P40424

SDS-PAGE



 Tel: 1-631-559-9269 1-516-512-3133

 Email: info@creative-biomart.com  Fax: 1-631-938-8127

 45-1 Ramsey Road, Shirley, NY 11967, USA