

Human PC-3 Whole Cell Lysate

Cat. No. PC-3-015HCL **Lot. No.** (See product label)

SPECIFICATION

Product Overview	Ready-to-use whole cell lysates are derived from cell lines or tissues using highly refined extraction protocols to ensure exceptionally high quality, protein integrity and lot-to-lot reproducibility. All extracts are tested by SDS-PAGE using 4-20% gradient gels and immunoblot analysis using antibodies to key cell signaling components to confirm the presence of both high molecular weight and low molecular weight proteins.
Species	Human
Form	Liquid (sterile filtered)
Specificity	PC-3 cells were grown in F-12K Medium supplemented with 10% fetal bovine serum. Cells were washed with PBS and then incubated on ice in modified RIPA buffer to lyse the cells. Protein integrity was ensured using a cocktail of protease inhibitors with broad specificity for the inhibition of aspartic, cysteine, and serine proteases as well as aminopeptidases (0.1 mM AEBSF HCl, 0.08 μM Aprotinin, 5 μM Bestatin, 1.5 μM E-64, 2 μM Leupeptin Hemisulfate, 1 μM Pepstatin A). Phosphatase inhibitors 1 mM NaF and 1 mM Na ₃ VO ₄ were also added. Cell debris was removed by centrifugation. Protein concentration was determined by a modified BCA assay using a commercially available kit. Protein concentration was adjusted to 2 mg/mL and then an equal volume of 2x SDS-PAGE sample buffer was added.
Applications	WB, SDS-PAGE

 Tel: 1-631-559-9269 1-516-512-3133

 Email: info@creative-biomart.com  Fax: 1-631-938-8127

 45-1 Ramsey Road, Shirley, NY 11967, USA

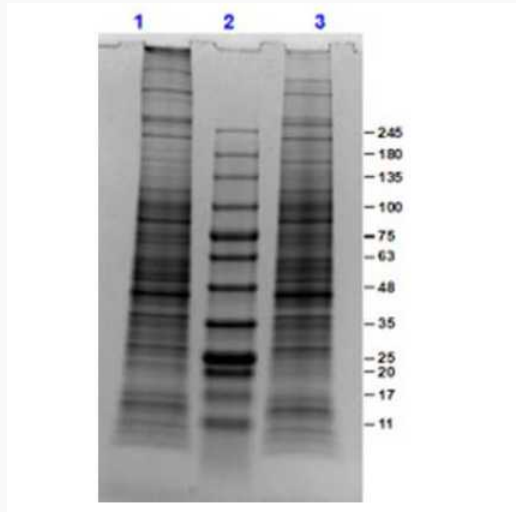
Cell Line	Human - grade IV, adenocarcinoma of the prostate/bone
Lysate Fractionation	Whole Cell Lysate
Lysate Stimulation	Not Stimulated
Culture Type	Tissue Culture
Induction	None (Control)
Concentration	1.0 mg/mL by BCA assay
Buffer	1x SDS-PAGE Sample Buffer (62.5 mM Tris HCl, 2% SDS, 10% Glycerol and 0.005% bromophenol blue, pH 6.8)
Preservative	None
Stabilizer	10% (v/v) Glycerol
Shipping	Dry Ice
Storage	Store vial at -70 centigrade or COLDER. For extended storage, aliquot contents to minimize freeze/thaw cycles.
Expiration	Expiration date is three months from date of receipt.

 Tel: 1-631-559-9269 1-516-512-3133

 Email: info@creative-biomart.com  Fax: 1-631-938-8127

 45-1 Ramsey Road, Shirley, NY 11967, USA

SDS-PAGE



SDS-PAGE of PC-3 Whole Cell Lysate.

Lane 1: PC-3 Whole Cell Lysate (10 µg) Reduced.

Lane 2: Opal Prestained Molecular Weight Marker.

Lane 3: PC-3 Whole Cell Lysate (10 µg) Non-Reduced.

Results show wide range of molecular weight bands with no signs of degradation.

 Tel: 1-631-559-9269 1-516-512-3133

 Email: info@creative-biomart.com  Fax: 1-631-938-8127

 45-1 Ramsey Road, Shirley, NY 11967, USA