

Recombinant Human PC Protein, Myc/DDK-tagged, C13 and N15-labeled

Cat. No. PC-4571H **Lot. No.** (See product label)

SPECIFICATION

Product Overview	PC MS Standard C13 and N15-labeled recombinant protein (NP_000911) with a C-terminal MYC/DDK tag, was expressed in HEK293 cells.
Species	Human
Source	HEK293
Description	<p>This gene encodes pyruvate carboxylase, which requires biotin and ATP to catalyse the carboxylation of pyruvate to oxaloacetate. The active enzyme is a homotetramer arranged in a tetrahedron which is located exclusively in the mitochondrial matrix. Pyruvate carboxylase is involved in gluconeogenesis, lipogenesis, insulin secretion and synthesis of the neurotransmitter glutamate. Mutations in this gene have been associated with pyruvate carboxylase deficiency. Alternatively spliced transcript variants with different 5' UTRs, but encoding the same protein, have been found for this gene.</p>
Molecular Mass	129.63 kDa
AA Sequence	<p>MLKFRTVHGGLRLLGIRRTSTAPAASPNVRRLEYKPIKKVMVANRGEIAIRVFRAC LGIRTVAIYSEQDTGQMHRQKADEAYLIGRGLAPVQAYLHIPDIIKVAKENNVDVHP GYGFLSERADFAQACQDAGVRFI GPSPEVVRKMGDKVEARAIAAAGVPVVPGTDA PITSLHEAHEFSNTYGFPIIFKAA YGGGGRGMRVVHSYEELEENYTRAYSEALAAFG NGALFVEKFIEKPRHIEVQILGDQYGNILHLYERDCSIQRRHQKVVEIAPAAHLDPQLR</p>

 Tel: 1-631-559-9269 1-516-512-3133

 Email: info@creative-biomart.com  Fax: 1-631-938-8127

 45-1 Ramsey Road, Shirley, NY 11967, USA

TRLTSDSVKLAKQVGYENAGTVEFLVDRHGKHYFIEVNSRLQVEHTVTEEITDVDLV
 HAQIHVAEGRSLPDLGLRQENIRINGCAIQCRVTTEDPARSFQPD TGRIEVFRSGEG
 MGIRLDNASAFQGAVISPHYDSL LVKVIAHGKDHPTAATKMSRALAEFRVRGVKTNIA
 FLQNVLNNQQFLAGTVDTQFIDENPELFQLRPAQNRAQKLLHYLGHVMVNGPTTPIP
 VKASPSPTDPVPAVPIGPPPAGFRDILLREGPEGFARAVRNHPGLLLMDTTFRDAH
 QSLLATRVTRTHDLKKIAPYVAHNFSKLF SMENWGGATFDVAMRFLYECPWRRRLQEL
 RELIPNIPFQMLLRGANAVGYTNYPDNVVF KFCEVAKENGMDVFRVFD SLNYLPNML
 LGMEAAGSAGGVVEAAISYTG DVADPSRTKYSLQYYMGLAEELVRAGTHILCIKDMA
 GLLKPTACTMLVSSLRDRFPDLPLHIHHTD TSGAGVAAMLACAQAGADVVDVAADS
 MSGMTSQPSMGALVACTRG TPLDTEVPMERVFDYSEYWEGARGLYAAFDCATM
 KSGNSDVYENEIPGGQYTNLHFQAHS MGLGSKFKEVKKAYVEANQMLGDLIKVTPS
 SKIVGDLAQFMVQNGLSRAEAEAEAEELS FPRSVEFLQGYIGVPHGGFPEPFRSK
 VLKDLPRVEGRPGASLPPLDLQALEKELV DRHGEEVTPEDVLSAAMYPDVFAHFKD
 FTATFGPLDSL NTRLFLQGPKIAEEFEVELER GKTLHIKALAVSDLN RAGQRQVFFEL
 NGQLRSILVKDTQAMKEMHFHPKALKDV KGQIGAPMPGKVIDIKVVAGAKVAKGQPL
 CVLSAMKMETVVTSPMEGTVRKVHVTKDM TLEGDDLILEIETRTRPLEQKLISEEDLA
 ANDILDYKDDDDKV

Purity > 80% as determined by SDS-PAGE and Coomassie blue staining

Stability Stable for 3 months from receipt of products under proper storage and handling conditions.

Storage Store at -80 centigrade. Avoid repeated freeze-thaw cycles.

Concentration 50 µg/mL as determined by BCA

Storage Buffer 100 mM glycine, 25 mM Tris-HCl, pH 7.3.

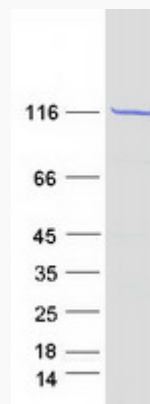
GENE INFORMATION

 Tel: 1-631-559-9269 1-516-512-3133

 Email: info@creative-biomart.com  Fax: 1-631-938-8127

 45-1 Ramsey Road, Shirley, NY 11967, USA

Gene Name	PC pyruvate carboxylase [Homo sapiens (human)]
Official Symbol	PC
Synonyms	PC; pyruvate carboxylase; pyruvate carboxylase, mitochondrial; PCB; pyruvic carboxylase;
Gene ID	5091
mRNA Refseq	NM_000920
Protein Refseq	NP_000911
MIM	608786
UniProt ID	P11498

SDS-PAGE


 Tel: 1-631-559-9269 1-516-512-3133

 Email: info@creative-biomart.com  Fax: 1-631-938-8127

 45-1 Ramsey Road, Shirley, NY 11967, USA