

## Active Recombinant Human PC protein, His-tagged

Cat. No. PC-760H Lot. No. (See product label)

### SPECIFICATION

<b>Product Overview</b>	Active Recombinant Human PC protein(P11498)(36-486 aa), fused with N-terminal His tag, was expressed in E.coli.
<b>Species</b>	Human
<b>Source</b>	E.coli
<b>ProteinLength</b>	36-486 aa
<b>Form</b>	PBS, pH7.4, containing 0.01% SKL, 1mM DTT, 5% Trehalose and Proclin300.
<b>Bio-activity</b>	<p>Pyruvate carboxylase (PC) is a mitochondrial, biotin-containing enzyme catalyzing the ATP-dependent synthesis of oxaloacetate from pyruvate and bicarbonate, with a critical anaplerotic role in sustaining the brain metabolism. Pyruvate carboxylase (PC) deficiency is a rare autosomal recessive mitochondrial neurometabolic disorder of energy deficit resulting in high morbidity and mortality, with limited therapeutic options. Besides, PCK2 has been identified as an interactor of PC, thus a functional binding ELISA assay was conducted to detect the interaction of recombinant human PC and recombinant human PCK2. Briefly, biotin-linked PC were diluted serially in PBS, with 0.01% BSA (pH 7.4). Duplicate samples of 100 ul were then transferred to PCK2-coated microtiter wells and incubated for 1h at 37°C. Wells were washed with PBST 3 times and incubation with Streptavidin-HRP for 30 min, then wells were aspirated and washed 5 times. With the addition of substrate solution, wells were incubated 15-25 minutes at 37°C. Finally, add 50 μstop solution to the wells and read</p>

 Tel: 1-631-559-9269 1-516-512-3133

 Email: [info@creative-biomart.com](mailto:info@creative-biomart.com)  Fax: 1-631-938-8127

 45-1 Ramsey Road, Shirley, NY 11967, USA

at 450 nm immediately. The binding activity of PC and PCK2 was shown, the EC50 for this effect is 0.056 ug/mL.

<b>Molecular Mass</b>	53.6kDa
<b>Endotoxin</b>	<1.0EU per 1µg (determined by the LAL method).
<b>Purity</b>	> 90%
<b>Storage</b>	Avoid repeated freeze/thaw cycles. Store at 2-8°C for one month. Store at -20°C for 12 months. Aliquot and store at -80°C for 12 months.
<b>Reconstitution</b>	Reconstitute in 10mM PBS (pH7.4) to a concentration of 0.1-1.0 mg/mL. Do not vortex.

## GENE INFORMATION

<b>Gene Name</b>	PC pyruvate carboxylase [ Homo sapiens ]
<b>Official Symbol</b>	PC
<b>Synonyms</b>	PC; pyruvate carboxylase; pyruvate carboxylase, mitochondrial; PCB; pyruvic carboxylase;
<b>Gene ID</b>	5091
<b>mRNA Refseq</b>	NM_000920
<b>Protein Refseq</b>	NP_000911
<b>MIM</b>	608786

 Tel: 1-631-559-9269 1-516-512-3133

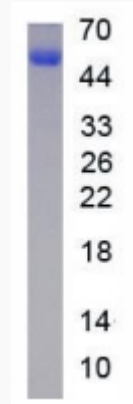
 Email: [info@creative-biomart.com](mailto:info@creative-biomart.com)  Fax: 1-631-938-8127

 45-1 Ramsey Road, Shirley, NY 11967, USA

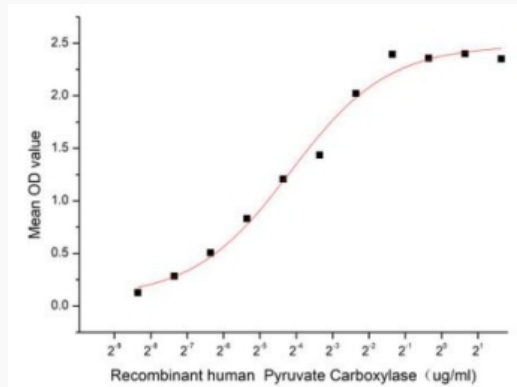
UniProt ID

P11498

SDS-PAGE



Activity



 Tel: 1-631-559-9269 1-516-512-3133

 Email: [info@creative-biomart.com](mailto:info@creative-biomart.com)  Fax: 1-631-938-8127

 45-1 Ramsey Road, Shirley, NY 11967, USA