

Recombinant Full Length Human PCCA Protein, C-Flag-tagged

Cat. No. PCCA-502HFL **Lot. No.** (See product label)

SPECIFICATION

Product Overview	Recombinant Full Length Human PCCA Protein, fused to Flag-tag at C-terminus, was expressed in Mammalian cells.
Species	Human
Source	Mammalian Cells
Description	The protein encoded by this gene is the alpha subunit of the heterodimeric mitochondrial enzyme Propionyl-CoA carboxylase. PCCA encodes the biotin-binding region of this enzyme. Mutations in either PCCA or PCCB (encoding the beta subunit) lead to an enzyme deficiency resulting in propionic acidemia. Multiple transcript variants encoding different isoforms have been found for this gene.
Form	25 mM Tris HCl, pH 7.3, 100 mM glycine, 10% glycerol.
Molecular Mass	75 kDa
AA Sequence	MAGFWVGTAPLVAAGRGRWPPQQLMLSAALRTLKHVLYYSRQCLMVSRNLGSV GYDPNEKTFDKILVAN RGEIACRVIRTCKKMGIKTVAIHSDVDASSVHVKMADEAVC VGPAPTSKSYLNMDAIMEAIKKTRAQAVH PGYGFLSENKEFARCLAAEDVFIGPDT HAIQAMGDKIESKLLAKKAEVNTIPGFDGVVKDAEEAVRIAR EIGYPVMIKASAGGGG KGMRIAWDDEETRDGFRLLSSQEAASSFGDDRLLIEKFIDNPRHIEIQVLGDKHG NAL WLNRECSIQRRNQKVVEEAPSIFLDAETR RAMGEQAVALARAVKYSSAGTVEFLV DSKKNFYFLEM NTRLQVEHPVTECITGLDLVQEMIRVAKGYPLRHKQADIRINGWAV ECRVYAEDPYKSFGLPSIGRLSQY QEPLHLPGVRVDSGIQPGSDISIYYDPMISKLIT

 Tel: 1-631-559-9269 1-516-512-3133

 Email: info@creative-biomart.com  Fax: 1-631-938-8127

 45-1 Ramsey Road, Shirley, NY 11967, USA

YGSDRTEALKRMADALDNYVIRGVTHNIALLEVII NSRFVKGDISTKFLSDVYPDGF
 KGHMLTKSEKNQLLAIASSLFVAFQLRAQHFQENSRMPVIKPDIANWE LSVKLHDKV
 HTVVASNNGSVFSVEVDGSKLNVTSTWNLASPLLSVSDGTQRTVQCLSREAGGN
 MSIQFL GTVYKVNILTRLAAELNKFMLEKVTEDTSSVLRSPMPGVVVAVSVKPGDAV
 AEGQEICVIEAMKMQNSMT
 AGKTGTVKSVHCQAGDTVGEGLLVELETRTRPLEQKLISEEDLAANDILDYKDDDD
 KV

Purity	> 80% as determined by SDS-PAGE and Coomassie blue staining.
Stability	Stable for 12 months from the date of receipt of the product under proper storage and handling conditions. Avoid repeated freeze-thaw cycles.
Storage	Store at -80 centigrade.
Concentration	>50 ug/mL as determined by microplate BCA method.
Preparation	Recombinant protein was captured through anti-DDK affinity column followed by conventional chromatography steps.
Protein Families	Druggable Genome
Protein Pathways	Metabolic pathways, Propanoate metabolism, Valine, leucine and isoleucine degradation
Full Length	Full L.

GENE INFORMATION

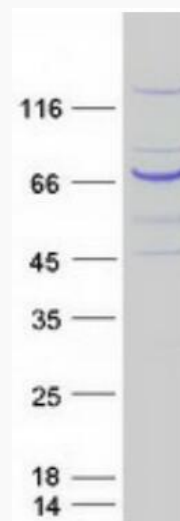
Gene Name [PCCA propionyl-CoA carboxylase subunit alpha \[Homo sapiens \(human\) \]](#)

 Tel: 1-631-559-9269 1-516-512-3133

 Email: info@creative-biomart.com  Fax: 1-631-938-8127

 45-1 Ramsey Road, Shirley, NY 11967, USA

Official Symbol	PCCA
Synonyms	PCCase alpha subunit; propanoyl-CoA:carbon dioxide ligase alpha subunit; propionyl-CoA carboxylase alpha chain, mitochondrial; propionyl-coenzyme A carboxylase, alpha polypeptide; Propionyl Coenzyme A carboxylase alpha polypeptide
Gene ID	5095
mRNA Refseq	NM_000282.4
Protein Refseq	NP_000273.2
MIM	232000
UniProt ID	P05165



Coomassie blue staining of purified PCCA protein.

 Tel: 1-631-559-9269 1-516-512-3133

 Email: info@creative-biomart.com  Fax: 1-631-938-8127

 45-1 Ramsey Road, Shirley, NY 11967, USA