

Recombinant Human PCDH1 Protein, Myc/DDK-tagged, C13 and N15-labeled

Cat. No. PCDH1-2120H Lot. No. (See product label)

SPECIFICATION

Product Overview	PCDH1 MS Standard C13 and N15-labeled recombinant protein (NP_115796) with a C-terminal MYC/DDK tag, was expressed in HEK293 cells.
Species	Human
Source	HEK293
Description	This gene belongs to the protocadherin subfamily within the cadherin superfamily. The encoded protein is a membrane protein found at cell-cell boundaries. It is involved in neural cell adhesion, suggesting a possible role in neuronal development. The protein includes an extracellular region, containing 7 cadherin-like domains, a transmembrane region and a C-terminal cytoplasmic region. Cells expressing the protein showed cell aggregation activity. Alternative splicing occurs in this gene.
Molecular Mass	130.1 kDa
AA Sequence	MDSGAGGRRRCPEAALLILGPPRMEHLRHSPGGGQRRLLPSMLLALLLLLAPSPGH ATRVVYKVPPEEQPPNTLIGSLAADYGFPDVGHLYKLEVGAPYLRVDGKTGDIFTTET SIDREGLRECQNQLPGDPCILEFEVSITDLVQNGSPRLLLEGQIEVQDINDNTPNFASP VITLAIPIENTNIGSLFPIPLASDRDAGPNGVASYELQAGPEAQELFGLQVAEDQEEKQ PQLIVMGNLDRERWDSYDLTIKVQDGGSPPRASSALLRVTVLDTNDNAPKFERPSY EAELSENSPIGHSVIQVKANDSDQGANAIEIYTFHQAPEVVRLLRLDRNTGLITVQG PVDREDLSTLRFVSLAKDRGTNPKSARAQVVVTVKDMNDNAPTIEIRGIGLVTHQDG

 Tel: 1-631-559-9269 1-516-512-3133

 Email: info@creative-biomart.com  Fax: 1-631-938-8127

 45-1 Ramsey Road, Shirley, NY 11967, USA

MANISEDVAEETAVALVQVSDRDEGENAAVTCVVAGDVFPQLRQASETGSDSKKKY
 FLQTTTPLDYEKVKDYTIEIVAVDSGNPPLSSTNSLKVQVVDVNDNAPVFTQSVTEVA
 FPENNKPGEVIAEITASDADSGSNAELVYSLEPEPAAKGLFTISPETGEIQVKTSLDRE
 QRESYELKVVAADRGSPSLQGTATVLVNVLDCNDNDPKFMLSGYNFVSMENMPAL
 SPVGMVTVIDGDKGENAQVQLSVEQDNGDFVIQNGTGTILSSLSFDREQQSTYTFQ
 LKAVDGGVPPRSAYVGVTVINVLDEENDNAPYITAPSNTSHKLLTPQTRLGETVSQVAA
 EDFDSGVNAELIYSIAGGNPYGLFQIGSHSGAITLEKEIERRHHGLHRLVVKVSDRGK
 PPRYGTALVHLYVNETLANRTLLETLLGHSLDTPLDIDIAGDPEYERSKQQRGNILFGV
 VAGVVAVALLIALAVLVRYCRQREAKSGYQAGKKETKDLYAPKPSGKASKGNKSKG
 KKS KSPKPKVPEVEDEEAGLQKSLKFNLMSDAPGDSPRIHLPLNYPGSPDLGRHY
 RSNSPLPSIQLQPQSPSASKKHQVVQDLPPANTFVGTGDTTSTGSEQYSDYSYRTN
 PPKYPSKQLPHRRVTFSATSQAQELQDPSQHSYYDSGLEESETPSSKSSSGPRLGP
 LALPEDHYERTTPDGSIGEMEHPENDLRPLPDVAMTGTCTRECSEFGHSDTCWMP
 GQSSPSRRTKSSALKLSTFVPYQDRGGQEPAGAGSPSPPEDRNTKTAPVRLPSYS
 AFSHSSHDSCKDSATLEEIPLTQTSDFPPAATPASAQTAKREIYLTRTRPLEQKLISEE
 DLAANDILDYKDDDDKV

Purity	> 80% as determined by SDS-PAGE and Coomassie blue staining
Stability	Stable for 3 months from receipt of products under proper storage and handling conditions.
Storage	Store at -80 centigrade. Avoid repeated freeze-thaw cycles.
Concentration	50 µg/mL as determined by BCA
Storage Buffer	100 mM glycine, 25 mM Tris-HCl, pH 7.3.

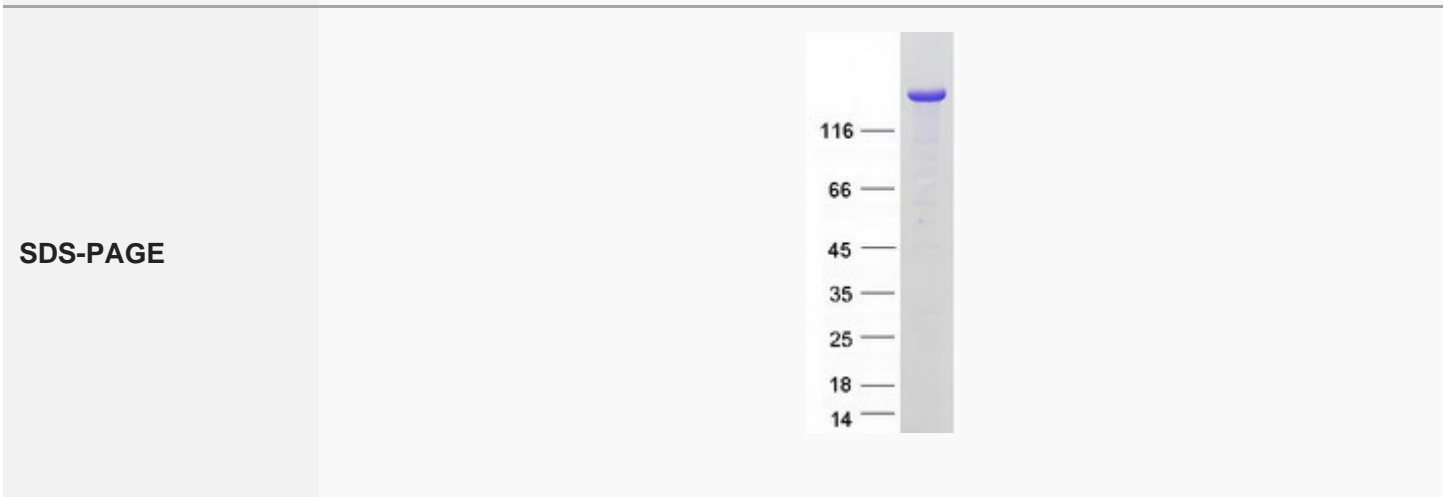
GENE INFORMATION

 Tel: 1-631-559-9269 1-516-512-3133

 Email: info@creative-biomart.com  Fax: 1-631-938-8127

 45-1 Ramsey Road, Shirley, NY 11967, USA

Gene Name	PCDH1 protocadherin 1 [Homo sapiens (human)]
Official Symbol	PCDH1
Synonyms	PCDH1; protocadherin 1; protocadherin 1 (cadherin like 1); protocadherin-1; pc42; cadherin-like 1; protocadherin 42; protocadherin-42; cadherin-like protein 1; PC42; PCDH42; FLJ53887; MGC45991;
Gene ID	5097
mRNA Refseq	NM_032420
Protein Refseq	NP_115796
MIM	603626
UniProt ID	Q08174



Tel: 1-631-559-9269 1-516-512-3133

Email: info@creative-biomart.com Fax: 1-631-938-8127

45-1 Ramsey Road, Shirley, NY 11967, USA