

Recombinant Human PCDH1 Protein (Thr58-Asn852), C-His tagged

Cat. No. PCDH1-5889H Lot. No. (See product label)

SPECIFICATION

Product Overview	Recombinant human PCDH1 (Thr58-Asn852) fused with the C-terminal His tag was expressed in mammalian cells.
Species	Human
Source	Mammalian Cells
ProteinLength	Thr58-Asn852
Form	Lyophilized powder/frozen liquid
Molecular Mass	87.45 kDa
Purity	> 90 % as determined by SDS-PAGE
Notes	For research use only.
Storage	Use a manual defrost freezer and avoid repeated freeze thaw cycles. Store at 2 to 8 centigrade for one week. Store at -20 to -80 centigrade for twelve months from the date of receipt.
Storage Buffer	Supplied as solution form in PBS or lyophilized from PBS.
Reconstitution	Reconstitute in sterile water for a stock solution.

 Tel: 1-631-559-9269 1-516-512-3133

 Email: info@creative-biomart.com  Fax: 1-631-938-8127

 45-1 Ramsey Road, Shirley, NY 11967, USA

Shipping They are shipped out with dry ice/blue ice unless customers require otherwise.

GENE INFORMATION

Gene Name PCDH1 protocadherin 1 [Homo sapiens (human)]

Official Symbol PCDH1

Synonyms PCDH1; protocadherin 1; protocadherin 1 (cadherin like 1); protocadherin-1; pc42; cadherin-like 1; protocadherin 42; protocadherin-42; cadherin-like protein 1; PC42; PCDH42; FLJ53887; MGC45991;

Gene ID 5097

mRNA Refseq NM_002587

Protein Refseq NP_002578

MIM 603626

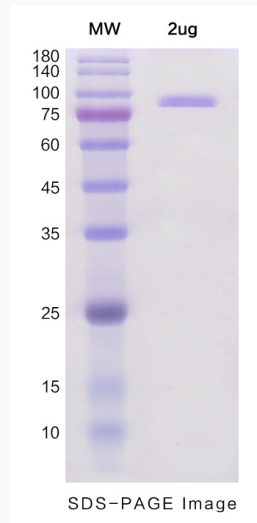
UniProt ID Q08174

 Tel: 1-631-559-9269 1-516-512-3133

 Email: info@creative-biomart.com  Fax: 1-631-938-8127

 45-1 Ramsey Road, Shirley, NY 11967, USA

SDS-PAGE



 Tel: 1-631-559-9269 1-516-512-3133

 Email: info@creative-biomart.com  Fax: 1-631-938-8127

 45-1 Ramsey Road, Shirley, NY 11967, USA