

## Recombinant Human PCDH10 Protein (Gln19-Thr715), C-His tagged

Cat. No. PCDH10-6085H Lot. No. (See product label)

### SPECIFICATION

<b>Product Overview</b>	Recombinant human PCDH10 (Gln19-Thr715) fused with the C-terminal His tag was expressed in mammalian cells.
<b>Species</b>	Human
<b>Source</b>	Mammalian Cells
<b>ProteinLength</b>	Gln19-Thr715
<b>Form</b>	Lyophilized powder/frozen liquid
<b>Molecular Mass</b>	76.67 kDa
<b>Purity</b>	> 90 % as determined by SDS-PAGE
<b>Notes</b>	For research use only.
<b>Storage</b>	Use a manual defrost freezer and avoid repeated freeze thaw cycles. Store at 2 to 8 centigrade for one week. Store at -20 to -80 centigrade for twelve months from the date of receipt.
<b>Storage Buffer</b>	Supplied as solution form in PBS or lyophilized from PBS.
<b>Reconstitution</b>	Reconstitute in sterile water for a stock solution.

 Tel: 1-631-559-9269 1-516-512-3133

 Email: [info@creative-biomart.com](mailto:info@creative-biomart.com)  Fax: 1-631-938-8127

 45-1 Ramsey Road, Shirley, NY 11967, USA

**Shipping**

They are shipped out with dry ice/blue ice unless customers require otherwise.

**GENE INFORMATION****Gene Name**

PCDH10 protocadherin 10 [ Homo sapiens (human) ]

**Official Symbol**

PCDH10

**Synonyms**

PCDH10; protocadherin 10; protocadherin-10; KIAA1400; OL PCDH; ortholog of OL-pcdh; PCDH19; OL-PCDH; MGC133344; DKFZp761O2023;

**Gene ID**

57575

**mRNA Refseq**

NM\_032961

**Protein Refseq**

NP\_116586

**MIM**

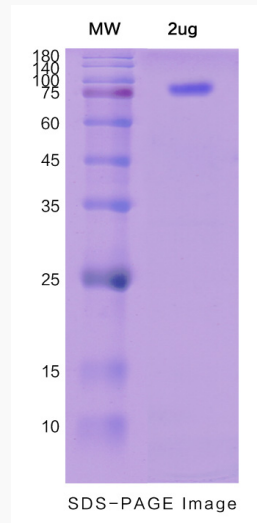
608286

**UniProt ID**

Q9P2E7

 Tel: 1-631-559-9269 1-516-512-3133 Email: [info@creative-biomart.com](mailto:info@creative-biomart.com)  Fax: 1-631-938-8127 45-1 Ramsey Road, Shirley, NY 11967, USA

**SDS-PAGE**



 Tel: 1-631-559-9269 1-516-512-3133

 Email: [info@creative-biomart.com](mailto:info@creative-biomart.com)  Fax: 1-631-938-8127

 45-1 Ramsey Road, Shirley, NY 11967, USA