

Recombinant Human PCDHA4 Protein, Myc/DDK-tagged, C13 and N15-labeled

Cat. No. PCDHA4-5288H Lot. No. (See product label)

SPECIFICATION

Product Overview PCDHA4 MS Standard C13 and N15-labeled recombinant protein (NP_113688) with a C-terminal MYC/DDK tag, was expressed in HEK293 cells.

Species Human

Source HEK293

Description This gene is a member of the protocadherin alpha gene cluster, one of three related gene clusters tandemly linked on chromosome five that demonstrate an unusual genomic organization similar to that of B-cell and T-cell receptor gene clusters. The alpha gene cluster is composed of 15 cadherin superfamily genes related to the mouse CNR genes and consists of 13 highly similar and 2 more distantly related coding sequences. The tandem array of 15 N-terminal exons, or variable exons, are followed by downstream C-terminal exons, or constant exons, which are shared by all genes in the cluster. The large, uninterrupted N-terminal exons each encode six cadherin ectodomains while the C-terminal exons encode the cytoplasmic domain. These neural cadherin-like cell adhesion proteins are integral plasma membrane proteins that most likely play a critical role in the establishment and function of specific cell-cell connections in the brain. Alternative splicing has been observed and additional variants have been suggested but their full-length nature has yet to be determined.

Molecular Mass 86.2 kDa

 Tel: 1-631-559-9269 1-516-512-3133

 Email: info@creative-biomart.com  Fax: 1-631-938-8127

 45-1 Ramsey Road, Shirley, NY 11967, USA



AA Sequence

MEFSWGSGQESRRLLLLLLLLLAAWEAGNGQLHYSVSEEAKHGTFVGRIAQDLGLEL
 AELVPRLFRVASKGRGGLLEVNQLQNGILFVNSRIDREELCRRSAECSIHLEVIVDRPL
 QVFHVDVEVRDINDNPPVFPATQKNLSIAESRPLDSRFPLEGASDADIGENALLTYRL
 SPNEYFSLEKPPDELVKGLGLILRKS LDREEAPEIFLVL TATDGGKPELTGTVQLLIT
 VLDANDNAPAFDR TIYKVR LLENVPNGTLVIKLNASDLDEGLNGDIVYSFSNDISPNV
 KSKFHIDPITGQIIVKGYIDFEESKSYEIIIVEGIDK GQLPLSGHCRVIVEVEDNNDNVPD
 LEFKSLSLPIREDAPLGTVIALISVSDKDMGVNGLVTCSLTSHVPFKLVSTFKNYYSLV
 LDSALDRESVSAYELVV TARDGGSPSLWATASVSVEVADVNDNAPAFAPQPEYTVFV
 KENPPGCHIFTVSAWDADAQENALVSYSLVERRVGERALSSYVSVHAESGKVYAL
 QPLDHEELELLQFQVTARDAGVPPLG SNVTLQVFVLDENDNAPALLAPRAGGTGGA
 VSELVPWSVGVGHVVAKVRAVDADSGYNAWLSYELQP GTGGARIPFRVGLYTGEIS
 TTRALDETDAPRHRLLVLVKDHGEPALTATATVLVSLVESGQAPKASSRALVGAVGP
 DAALVDVNVYLIIAICAVSLLVLTLLLYTALRCSALPTEGACAPGKPTLVCSSAVGSW
 SYSQRRRPRVCSGEGPPKTDLMAFSPSLPDSRDREDQLQTTEESFAKVS VSGPTR
 TRPLEQKLISEEDLAANDILDYKDDDDKV

Purity

> 80% as determined by SDS-PAGE and Coomassie blue staining

Stability

Stable for 3 months from receipt of products under proper storage and handling conditions.

Storage

Store at -80 centigrade. Avoid repeated freeze-thaw cycles.

Concentration

50 µg/mL as determined by BCA

Storage Buffer

100 mM glycine, 25 mM Tris-HCl, pH 7.3.

GENE INFORMATION

Gene Name

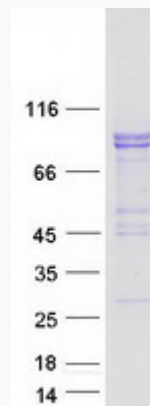
PCDHA4 protocadherin alpha 4 [Homo sapiens (human)]

Tel: 1-631-559-9269 1-516-512-3133

Email: info@creative-biomart.com Fax: 1-631-938-8127

45-1 Ramsey Road, Shirley, NY 11967, USA

Official Symbol	PCDHA4
Synonyms	PCDHA4; CNR1; CNRN1; CRNR1; PCDH-ALPHA4; protocadherin alpha 4; protocadherin alpha-4; PCDH-alpha-4; KIAA0345-like 10; ortholog of mouse CNR1
Gene ID	56144
mRNA Refseq	NM_031500
Protein Refseq	NP_113688
MIM	606310
UniProt ID	Q9UN74

SDS-PAGE


 Tel: 1-631-559-9269 1-516-512-3133

 Email: info@creative-biomart.com  Fax: 1-631-938-8127

 45-1 Ramsey Road, Shirley, NY 11967, USA