

# Recombinant Human PCK1 Protein, Myc/DDK-tagged, C13 and N15-labeled

**Cat. No.** PCK1-1666H    **Lot. No.** (See product label)

## SPECIFICATION

<b>Product Overview</b>	PCK1 MS Standard C13 and N15-labeled recombinant protein (NP_002582) with a C-terminal MYC/DDK tag, was expressed in HEK293 cells.
<b>Species</b>	Human
<b>Source</b>	HEK293
<b>Description</b>	<p>This gene is a main control point for the regulation of gluconeogenesis. The cytosolic enzyme encoded by this gene, along with GTP, catalyzes the formation of phosphoenolpyruvate from oxaloacetate, with the release of carbon dioxide and GDP.</p> <p>The expression of this gene can be regulated by insulin, glucocorticoids, glucagon, cAMP, and diet. Defects in this gene are a cause of cytosolic phosphoenolpyruvate carboxykinase deficiency. A mitochondrial isozyme of the encoded protein also has been characterized.</p>
<b>Molecular Mass</b>	69.2 kDa
<b>AA Sequence</b>	<p>MPPQLQNGLNLSAKVVQGSLSLDPQAVREFLENNALCQPDHIIHICDGSEEENGRLLGQMEEEGILRRLKKYDNCWLALTDPRDVARIKSTVIVTQEQRDTVPIPKTGLSQLGRWMSEEDFEKAFNARFPGCMKGRRTMYVIPFSMGPLGSPLSKIGIELTDSPPYVASM RIMTRMGTPVLEALGDGEFVKCLHSGCPLPLQKPLVNNWPCNPELTLIAHLPPDRRE IISFGSGYGGNSLLGKKCFALRMASRLAKEEGWLAEHMLVLGITNPEGEKKYLAAAF PSACGKTNLAMMNPSPGKWKVECVGDDIAWMKFDAQGHRLRAINPENGFFGVAPGT</p>

 Tel: 1-631-559-9269    1-516-512-3133

 Email: [info@creative-biomart.com](mailto:info@creative-biomart.com)     Fax: 1-631-938-8127

 45-1 Ramsey Road, Shirley, NY 11967, USA



SVKTNPNAIKTIQKNTIFTNVAETSDGGVYWEGIDEPLASGVTITSWKNKEWSSDGG  
EPCAHPNSRFCTPASQCPIIDAAWESPEGVPIEGIIIFGGRRPAGVPLVYEALSWQHGL  
VFVGAAMRSEATAAAEHKGGKIIMHDPFAMRPFFGYNFGKYLAHWLSMAQHPPAAKLP  
KIFHVNWFRKDKGKFLWPGFGENSRVLEWMFNRIDGKASTKLTPIGYIPKEDALNL  
KGLGHINMMELFSISKEFWEKEVEDIEKYLEQVNADLPCEIEREILALKQRISQMTRT  
RPLEQKLISEEDLAANDILDYKDDDDKV

<b>Purity</b>	> 80% as determined by SDS-PAGE and Coomassie blue staining
<b>Stability</b>	Stable for 3 months from receipt of products under proper storage and handling conditions.
<b>Storage</b>	Store at -80 centigrade. Avoid repeated freeze-thaw cycles.
<b>Concentration</b>	50 µg/mL as determined by BCA
<b>Storage Buffer</b>	100 mM glycine, 25 mM Tris-HCl, pH 7.3.

## GENE INFORMATION

<b>Gene Name</b>	PCK1 phosphoenolpyruvate carboxykinase 1 [ Homo sapiens (human) ]
<b>Official Symbol</b>	PCK1
<b>Synonyms</b>	PCK1; phosphoenolpyruvate carboxykinase 1 (soluble); phosphoenolpyruvate carboxykinase, cytosolic [GTP]; PEPCK C; PEP carboxykinase; phosphopyruvate carboxylase; phosphoenolpyruvate carboxylase; phosphoenolpyruvate carboxykinase, cytosolic; PEPCK1; PEPCKC; PEPCK-C; MGC22652;
<b>Gene ID</b>	5105

Tel: 1-631-559-9269 1-516-512-3133

Email: [info@creative-biomart.com](mailto:info@creative-biomart.com) Fax: 1-631-938-8127

45-1 Ramsey Road, Shirley, NY 11967, USA

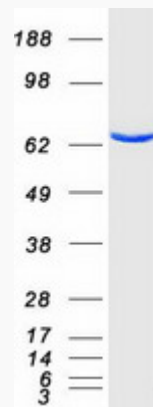
mRNA Refseq [NM\\_002591](#)

Protein Refseq [NP\\_002582](#)

MIM [614168](#)

UniProt ID [P35558](#)

SDS-PAGE



 Tel: 1-631-559-9269 1-516-512-3133

 Email: [info@creative-biomart.com](mailto:info@creative-biomart.com)  Fax: 1-631-938-8127

 45-1 Ramsey Road, Shirley, NY 11967, USA