

Recombinant Human PCOLCE Protein (Ala315-Cys437), N-His tagged

Cat. No. PCOLCE-4819H Lot. No. (See product label)

SPECIFICATION

Product Overview	Recombinant human PCOLCE (Ala315-Cys437) fused with the N-His tag was expressed in E. coli.
Species	Human
Source	E.coli
ProteinLength	Ala315-Cys437
Form	Lyophilized powder/frozen liquid
Molecular Mass	15.53 kDa
Purity	>90% as determined by SDS-PAGE.
Notes	For research use only.
Storage	Use a manual defrost freezer and avoid repeated freeze thaw cycles. Store at 2 to 8 centigrade for one week. Store at -20 to -80 centigrade for twelve months from the date of receipt.
Storage Buffer	0.01M PBS, pH 7.4, 0.02% NLS
Reconstitution	Reconstitute in sterile water for a stock solution.

 Tel: 1-631-559-9269 1-516-512-3133

 Email: info@creative-biomart.com  Fax: 1-631-938-8127

 45-1 Ramsey Road, Shirley, NY 11967, USA

Shipping They are shipped out with dry ice/blue ice unless customers require otherwise.

GENE INFORMATION

Gene Name PCOLCE procollagen C-endopeptidase enhancer [Homo sapiens (human)]

Official Symbol PCOLCE

Synonyms PCOLCE; procollagen C-endopeptidase enhancer; procollagen C-endopeptidase enhancer 1; PCPE; PCPE1; procollagen C proteinase enhancer 1; procollagen; type 1; COOH terminal proteinase enhancer; procollagen C-proteinase enhancer 1; procollagen COOH-terminal proteinase enhancer 1; type 1 procollagen C-proteinase enhancer protein; type I procollagen COOH-terminal proteinase enhancer; procollagen, type 1, COOH-terminal proteinase enhancer; PCPE-1;

Gene ID 5118

mRNA Refseq NM_002593

Protein Refseq NP_002584

MIM 600270

UniProt ID Q15113

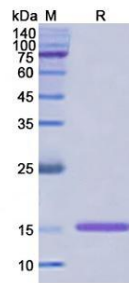
 Tel: 1-631-559-9269 1-516-512-3133

 Email: info@creative-biomart.com  Fax: 1-631-938-8127

 45-1 Ramsey Road, Shirley, NY 11967, USA



SDS-PAGE



Tel: 1-631-559-9269 1-516-512-3133

Email: info@creative-biomart.com Fax: 1-631-938-8127

45-1 Ramsey Road, Shirley, NY 11967, USA