

# Recombinant Human PCOLCE Protein, Myc/DDK-tagged, C13 and N15-labeled

Cat. No. PCOLCE-6411H Lot. No. (See product label)

## SPECIFICATION

### Product Overview

PCOLCE MS Standard C13 and N15-labeled recombinant protein (NP\_002584) with a C-terminal MYC/DDK tag, was expressed in HEK293 cells.

### Species

Human

### Source

HEK293

### Description

Fibrillar collagen types I-III are synthesized as precursor molecules known as procollagens. These precursors contain amino- and carboxyl-terminal peptide extensions known as N- and C-propeptides, respectively, which are cleaved, upon secretion of procollagen from the cell, to yield the mature triple helical, highly structured fibrils. This gene encodes a glycoprotein which binds and drives the enzymatic cleavage of type I procollagen and heightens C-proteinase activity.

### Molecular Mass

48 kDa

### AA Sequence

MLPAATASLLGPLLACALLPFAQQQTPNYTRPVFLCGGDVKGESGYVASEGFPNL  
 YPPNKECIWITITVPEGQTVSLSFRVFDLELHPACRYDALEVFAGSGTSGQRLGRFCG  
 TFRPAPLVAPGNQVTLRMTTDEGTGGRGFLLWYSGRATSGTEHQFCGGRLEKAQG  
 TLTPNWPESDYPPGISCSWHIIAPPDQVIALTFEKFDLEPDTYCRYDSVSVFNGAVS  
 DDSRRLGKFCGDAVPGSISSEGNELLVQFVSDLSVTADGFSASYKTLPRGTAKGQ  
 GPGPKRGTEPKVKLPPKSPPEKTEESPSAPDAPTCPKQCRRTGTLQSNFCASSLV  
 VTATVKSMVREPGGLAVTVSLIGAYKTGGLDLPSPTGASLKFYVPCQCPMKK

 Tel: 1-631-559-9269 1-516-512-3133

 Email: [info@creative-biomart.com](mailto:info@creative-biomart.com)  Fax: 1-631-938-8127

 45-1 Ramsey Road, Shirley, NY 11967, USA

GVSYLLMGQVEENRGPVLPPEFVVLHRPNQDQILTNLKSRKCPVRAAASQDT  
RTRPLEQKLISEEDLAANDILDYKDDDDKV

**Purity** > 80% as determined by SDS-PAGE and Coomassie blue staining

**Stability** Stable for 3 months from receipt of products under proper storage and handling conditions.

**Storage** Store at -80 centigrade. Avoid repeated freeze-thaw cycles.

**Concentration** 50 µg/mL as determined by BCA

**Storage Buffer** 100 mM glycine, 25 mM Tris-HCl, pH 7.3.

## GENE INFORMATION

**Gene Name** [PCOLCE](#) procollagen C-endopeptidase enhancer [ [Homo sapiens \(human\)](#) ]

**Official Symbol** [PCOLCE](#)

**Synonyms** PCOLCE; procollagen C-endopeptidase enhancer; procollagen C-endopeptidase enhancer 1; PCPE; PCPE1; procollagen C proteinase enhancer 1; procollagen; type 1; COOH terminal proteinase enhancer; procollagen C-proteinase enhancer 1; procollagen COOH-terminal proteinase enhancer 1; type 1 procollagen C-proteinase enhancer protein; type I procollagen COOH-terminal proteinase enhancer; procollagen, type 1, COOH-terminal proteinase enhancer; PCPE-1;

**Gene ID** [5118](#)

**mRNA Refseq** [NM\\_002593](#)

 Tel: 1-631-559-9269 1-516-512-3133

 Email: [info@creative-biomart.com](mailto:info@creative-biomart.com)  Fax: 1-631-938-8127

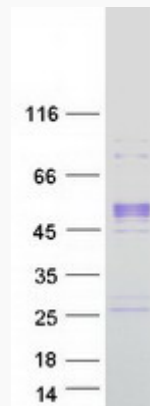
 45-1 Ramsey Road, Shirley, NY 11967, USA

**Protein Refseq** NP\_002584

**MIM** 600270

**UniProt ID** Q15113

**SDS-PAGE**



 Tel: 1-631-559-9269 1-516-512-3133

 Email: [info@creative-biomart.com](mailto:info@creative-biomart.com)  Fax: 1-631-938-8127

 45-1 Ramsey Road, Shirley, NY 11967, USA