

Recombinant Human PCSK1 protein, His-tagged

Cat. No. PCSK1-892H Lot. No. (See product label)

SPECIFICATION

Product Overview	Recombinant Human PCSK1 protein(NP_000430.3) (Met 1-Arg 617) was expressed in Human Cells, fused with a polyhistidine tag at the C-terminus.
Species	Human
Source	Human Cells
ProteinLength	1-617 aa
Form	Lyophilized from sterile 25mM Tris, 150mM NaCl, pH 7.5.
Molecular Mass	The purified recombinant human PCSK1 consists of 518 amino acids after removal of the pro peptide due to autocatalytic processing, corresponding to the active form (aa 111-617), and has a predicted molecular mass of 57.4 kDa. In SDS-PAGE under reducing conditions, the apparent molecular mass of the active rh PCSK1 is approximately 66 kDa due to glycosylation.
Endotoxin	< 1.0 EU per µg of the protein as determined by the LAL method.
Purity	> 95 % as determined by SDS-PAGE
Storage	Store it under sterile conditions at -20°C to -80°C upon receiving. Recommend to aliquot the protein into smaller quantities for optimal storage. Avoid repeated freeze-thaw cycles.

 Tel: 1-631-559-9269 1-516-512-3133

 Email: info@creative-biomart.com  Fax: 1-631-938-8127

 45-1 Ramsey Road, Shirley, NY 11967, USA

Reconstitution It is recommended that sterile water be added to the vial to prepare a stock solution of 0.2 ug/ul. Centrifuge the vial at 4°C before opening to recover the entire contents.

GENE INFORMATION

Gene Name PCSK1 proprotein convertase subtilisin/kexin type 1 [Homo sapiens]

Official Symbol PCSK1

Synonyms PCSK1; proprotein convertase subtilisin/kexin type 1; NEC1; neuroendocrine convertase 1; PC1; PC3; prohormone convertase 1; prohormone convertase 3; proprotein convertase 1; SPC3; NEC 1; BMIQ12;

Gene ID 5122

mRNA Refseq NM_000439

Protein Refseq NP_000430

MIM 162150

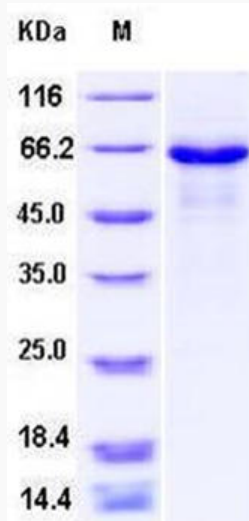
UniProt ID P29120

 Tel: 1-631-559-9269 1-516-512-3133

 Email: info@creative-biomart.com  Fax: 1-631-938-8127

 45-1 Ramsey Road, Shirley, NY 11967, USA

SDS-PAGE



 Tel: 1-631-559-9269 1-516-512-3133

 Email: info@creative-biomart.com  Fax: 1-631-938-8127

 45-1 Ramsey Road, Shirley, NY 11967, USA