

Recombinant Human PCSK9 protein, His-tagged

Cat. No. PCSK9-264H Lot. No. (See product label)

SPECIFICATION

Product Overview	Recombinant Human PCSK9 protein(Q8NBP7-1)(Gln31-Gln692), fused with C-terminal His tag, was expressed in HEK293.
Species	Human
Source	HEK293
ProteinLength	Gln31-Gln692
Tag	C-His
Form	Supplied as 0.22µm filtered solution in 20mM PB, 300mM NaCl, 10% glycerol (pH 7.4).
Bio-activity	Immobilized Human PCSK9, His Tag at 2µg/ml (100µl/Well) on the plate. Dose response curve for Anti-PCSK9 antibody, hFc Tag with the EC50 of 0.16µg/ml determined by ELISA.
Molecular Mass	Due to autocatalytic cleavage, the protein release the pro-form (59 kDa) and mature form (14 kDa). Due to glycosylation, the protein migrates to 65-68 kDa (pro-form) and 15kDa (mature form) based on Tris-Bis PAGE result.
Endotoxin	Less than 1EU per µg by the LAL method.
Purity	> 95% as determined by Tris-Bis PAGE; > 95% as determined by HPLC

 Tel: 1-631-559-9269 1-516-512-3133

 Email: info@creative-biomart.com  Fax: 1-631-938-8127

 45-1 Ramsey Road, Shirley, NY 11967, USA

Storage Valid for 12 months from date of receipt when stored at -80°C; Recommend to aliquot the protein into smaller quantities for optimal storage. Please do not repeated freeze-thaw cycles.

Reconstitution It is recommended that sterile water be added to the vial to prepare a stock solution of 0.2 ug/ul. Centrifuge the vial at 4°C before opening to recover the entire contents.

GENE INFORMATION

Gene Name PCSK9 proprotein convertase subtilisin/kexin type 9 [Homo sapiens]

Official Symbol PCSK9

Synonyms PCSK9; proprotein convertase subtilisin/kexin type 9; HCHOLA3, hypercholesterolemia, autosomal dominant 3; FH3; NARC 1; NARC1; NARC-1; HCHOLA3;

Gene ID 353175

MIM 607786

UniProt ID Q8NBP7

 Tel: 1-631-559-9269 1-516-512-3133

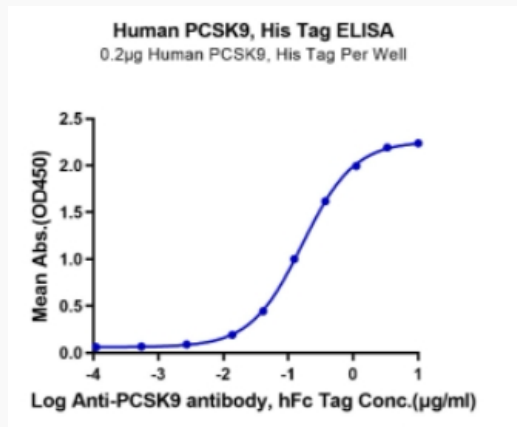
 Email: info@creative-biomart.com  Fax: 1-631-938-8127

 45-1 Ramsey Road, Shirley, NY 11967, USA

Tris-Bis PAGE



ELISA Data



 Tel: 1-631-559-9269 1-516-512-3133

 Email: info@creative-biomart.com  Fax: 1-631-938-8127

 45-1 Ramsey Road, Shirley, NY 11967, USA