

## Active Recombinant Porcine PDCD1 Protein, His-Tagged

Cat. No. PDCD1-01P    Lot. No. (See product label)

### SPECIFICATION

<b>Product Overview</b>	Recombinant Porcine PDCD1 Protein, His-Tagged was expressed in CHO cell
<b>Species</b>	Porcine
<b>Source</b>	CHO
<b>Description</b>	Programmed Death-1 receptor (PD-1), also known as CD279, is type I transmembrane protein belonging to the CD28 family of immune regulatory receptors. Other members of this family include CD28, CTLA-4, ICOS, and BTLA.
<b>Form</b>	Lyophilized
<b>Bio-activity</b>	Measured by its binding ability in a functional ELISA. When Recombinant Porcine B7-H1 Fc Chimera is immobilized at 1 µg/mL, 100 µL/well, the concentration of Recombinant Porcine PD-1 His-tag that produces 50% of the optimal binding response is approximately 1-6 µg/mL.
<b>Molecular Mass</b>	17 kDa
<b>N-terminal Sequence Analysis</b>	Leu25
<b>Endotoxin</b>	<0.10 EU per 1 µg of the protein by the LAL method.
<b>Purity</b>	>95%, by SDS-PAGE visualized with Silver Staining and quantitative densitometry by

 Tel: 1-631-559-9269    1-516-512-3133

 Email: [info@creative-biomart.com](mailto:info@creative-biomart.com)     Fax: 1-631-938-8127

 45-1 Ramsey Road, Shirley, NY 11967, USA

	Coomassie® Blue Staining.
<b>Storage</b>	Use a manual defrost freezer and avoid repeated freeze-thaw cycles. 12 months from date of receipt, -20 to -70 °C as supplied. 1 month, 2 to 8 °C under sterile conditions after reconstitution. 3 months, -20 to -70 °C under sterile conditions after reconstitution.
<b>Storage Buffer</b>	Lyophilized from a 0.2 µm filtered solution in PBS with Trehalose.
<b>Reconstitution</b>	Reconstitute at 500 µg/mL in PBS.
<b>Shipping</b>	The product is shipped at ambient temperature. Upon receipt, store it immediately at the temperature recommended below.

## GENE INFORMATION

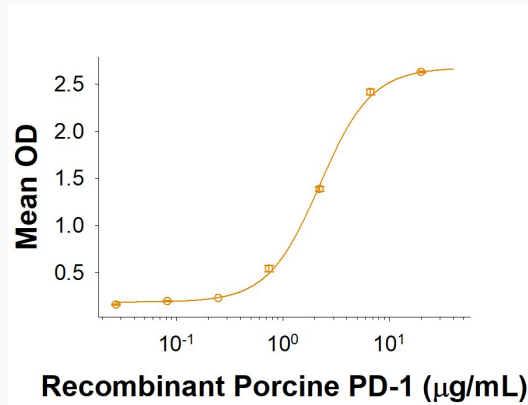
<b>Gene Name</b>	PDCD1 programmed cell death 1 [ <i>Sus scrofa</i> (pig) ]
<b>Official Symbol</b>	PDCD1
<b>Synonyms</b>	CD279 antigen; CD279; hPD-1; PD1; PD-1; PD1hPD-I; PDCD1; programmed cell death 1; programmed cell death protein 1; Protein PD-1; SLEB2
<b>Gene ID</b>	100533201
<b>mRNA Refseq</b>	NM_001204379.1
<b>Protein Refseq</b>	NP_001191308.1

 Tel: 1-631-559-9269 1-516-512-3133

 Email: [info@creative-biomart.com](mailto:info@creative-biomart.com)  Fax: 1-631-938-8127

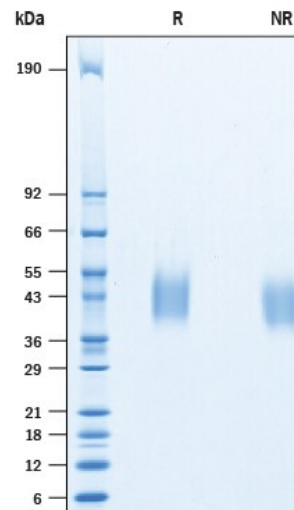
 45-1 Ramsey Road, Shirley, NY 11967, USA

### Binding Activity



When Recombinant Porcine B7-H1 Fc Chimera is immobilized at 1  $\mu\text{g/mL}$ , 100  $\mu\text{/well}$ , the concentration of Recombinant Porcine PD-1 His-tag that produces 50% of the optimal binding response is approximately 1-6  $\mu\text{g/mL}$ .

### SDS-PAGE



2  $\mu\text{g/lane}$  of Recombinant Porcine PD-1 His-tag Protein was resolved with SDS-PAGE under reducing (R) and non-reducing (NR) conditions and visualized by Coomassie<sup>®</sup> Blue staining, showing bands at 36-48 kDa.

Tel: 1-631-559-9269 1-516-512-3133

Email: [info@creative-biomart.com](mailto:info@creative-biomart.com) Fax: 1-631-938-8127

45-1 Ramsey Road, Shirley, NY 11967, USA