

## Active Recombinant Porcine PDCD1 Chimera Protein

Cat. No. PDCD1-02P Lot. No. (See product label)

### SPECIFICATION

<b>Product Overview</b>	Recombinant Porcine PDCD1 Chimera Protein was expressed in CHO cell
<b>Species</b>	Porcine
<b>Source</b>	CHO
<b>Description</b>	Programmed Death-1 receptor (PD-1), also known as CD279, is type I transmembrane protein belonging to the CD28 family of immune regulatory receptors. Other members of this family include CD28, CTLA-4, ICOS, and BTLA.
<b>Form</b>	Lyophilized
<b>Bio-activity</b>	Measured by its binding ability in a functional ELISA. When Recombinant Porcine PD-1 Fc Chimera is immobilized at 1 µg/mL (100 µL/well), Recombinant Human PD-L1/B7-H1 Fc Chimera that produces a 50% optimal binding response is found to be 0.03-0.3 µg/mL.
<b>Molecular Mass</b>	43 kDa
<b>N-terminal Sequence Analysis</b>	Leu25
<b>Endotoxin</b>	<0.10 EU per 1 µg of the protein by the LAL method.
<b>Purity</b>	>95%, by SDS-PAGE visualized with Silver Staining and quantitative densitometry by

 Tel: 1-631-559-9269 1-516-512-3133

 Email: [info@creative-biomart.com](mailto:info@creative-biomart.com)  Fax: 1-631-938-8127

 45-1 Ramsey Road, Shirley, NY 11967, USA

Coomassie® Blue Staining.

**Storage**

Use a manual defrost freezer and avoid repeated freeze-thaw cycles.  
 12 months from date of receipt, -20 to -70 °C as supplied.  
 1 month, 2 to 8 °C under sterile conditions after reconstitution.  
 3 months, -20 to -70 °C under sterile conditions after reconstitution.

**Storage Buffer**

Lyophilized from a 0.2 µm filtered solution in PBS with Trehalose.

**Reconstitution**

Reconstitute at 500 µg/mL in PBS.

**Shipping**

The product is shipped at ambient temperature. Upon receipt, store it immediately at the temperature recommended below.

## GENE INFORMATION

**Gene Name**

PDCD1 programmed cell death 1 [ *Sus scrofa* (pig) ]

**Official Symbol**

PDCD1

**Synonyms**

CD279 antigen; CD279; hPD-1; PD1; PD-1; PD1hPD-I; PDCD1; programmed cell death 1; programmed cell death protein 1; Protein PD-1; SLEB2

**Gene ID**

100533201

**mRNA Refseq**

NM\_001204379.1

**Protein Refseq**

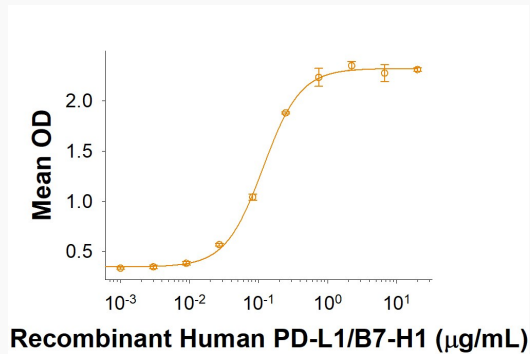
NP\_001191308.1

 Tel: 1-631-559-9269 1-516-512-3133

 Email: [info@creative-biomart.com](mailto:info@creative-biomart.com)  Fax: 1-631-938-8127

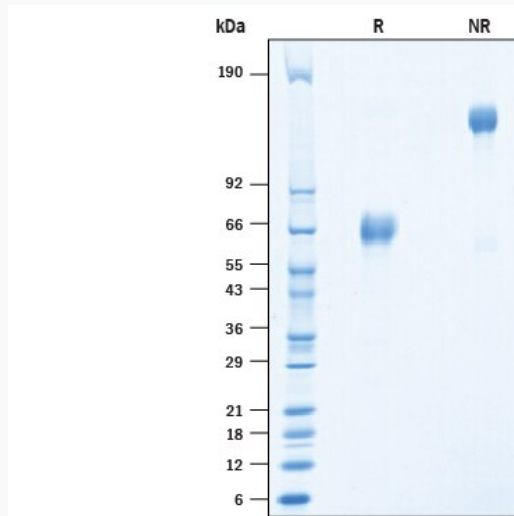
 45-1 Ramsey Road, Shirley, NY 11967, USA

### Binding Activity



When Recombinant Porcine PD-1 Fc Chimera is immobilized at 1  $\mu\text{g/mL}$  (100  $\mu\text{L}$ /well), Recombinant Human PD-L1/B7-H1 Fc Chimera that produces a 50% optimal binding response is found to be 0.03-0.3  $\mu\text{g/mL}$

### SDS-PAGE



2  $\mu\text{g/lane}$  of Recombinant Porcine PD-1 Fc Chimera Protein was resolved with SDS-PAGE under reducing (R) and non-reducing (NR) conditions and visualized by Coomassie<sup>®</sup> Blue staining, showing bands at 60-75 kDa and 120-150 kDa, respectively.

Tel: 1-631-559-9269 1-516-512-3133

Email: [info@creative-biomart.com](mailto:info@creative-biomart.com) Fax: 1-631-938-8127

45-1 Ramsey Road, Shirley, NY 11967, USA