

## Active Recombinant Human PDCD1 protein, His/Avi-tagged, Biotinylated

**Cat. No.** PDCD1-051H    **Lot. No.** (See product label)

### SPECIFICATION

<b>Product Overview</b>	Biotinylated Recombinant Human PDCD1(Leu25-Thr168) protein, fused to His/Avi tag at the C-terminus, was expressed in HEK293 cells .
<b>Species</b>	Human
<b>Source</b>	HEK293
<b>ProteinLength</b>	Leu25-Thr168
<b>Description</b>	<p>Programmed Death-1 receptor (PDCD1), also known as CD279, is type I transmembrane protein belonging to the CD28 family of immune regulatory receptors (1). Other members of this family include CD28, CTLA-4, ICOS, and BTLA (2-5). Mature mouse PDCD1 consists of a 149 amino acid (aa) extracellular region (ECD) with one immunoglobulin-like V-type domain, a 21 aa transmembrane domain, and a 98 aa cytoplasmic region. The mouse PDCD1 ECD shares 65% aa sequence identity with the human PD-1 ECD. The cytoplasmic tail contains two tyrosine residues that form the immunoreceptor tyrosine-based inhibitory motif (ITIM) and immunoreceptor tyrosine-based switch motif (ITSM) that are important for mediating PDCD1 signaling. PDCD1 acts as a monomeric receptor and interacts in a 1:1 stoichiometric ratio with its ligands PD-L1 (B7-H1) and PD-L2 (B7-DC) (6, 7). PD-1 is expressed on activated T cells, B cells, monocytes, and dendritic cells while PD-L1 expression is constitutive on the same cells and also on nonhematopoietic cells such as lung endothelial cells and hepatocytes (8, 9). Ligation of PD-L1 with PD-1 induces co-inhibitory signals on T</p>

 Tel: 1-631-559-9269    1-516-512-3133

 Email: [info@creative-biomart.com](mailto:info@creative-biomart.com)     Fax: 1-631-938-8127

 45-1 Ramsey Road, Shirley, NY 11967, USA

cells promoting their apoptosis, anergy, and functional exhaustion (10). Thus, the PD-1:PD-L1 interaction is a key regulator of the threshold of immune response and peripheral immune tolerance (11). Finally, blockade of the PD-1: PD-L1 interaction by either antibodies or genetic manipulation accelerates tumor eradication and shows potential for improving cancer immunotherapy (12, 13).

<b>Predicted N Terminal</b>	Leu25
<b>Form</b>	Lyophilized from a 0.2 µm filtered solution in PBS with Trehalose.
<b>Bio-activity</b>	Measured by its binding ability in a functional ELISA. When 500 ng/mL of Biotinylated Recombinant Human PDCD1 His-tag Avi-tag protein is immobilized, it binds to Recombinant Human PDCDL1 Fc Chimera with an ED50 of 1.2-7.2 ng/mL.
<b>Molecular Mass</b>	28-45 kDa, reducing conditions
<b>Endotoxin</b>	<0.10 EU per 1 µg of the protein by the LAL method.
<b>Purity</b>	>95%, by SDS-PAGE visualized with Silver Staining and quantitative densitometry by Coomassie® Blue Staining.
<b>Applications</b>	Bioactivity
<b>Storage</b>	Use a manual defrost freezer and avoid repeated freeze-thaw cycles.12 months from date of receipt, -20 to -70 °C as supplied.1 month, 2 to 8 °C under sterile conditions after reconstitution.3 months, ≤ -20 °C under sterile conditions after reconstitution.
<b>Reconstitution</b>	Reconstitute at 200 µg/mL in PBS.

 Tel: 1-631-559-9269 1-516-512-3133

 Email: [info@creative-biomart.com](mailto:info@creative-biomart.com)  Fax: 1-631-938-8127

 45-1 Ramsey Road, Shirley, NY 11967, USA

**Conjugation**                      Biotin

## GENE INFORMATION

**Gene Name**                      PDCD1 programmed cell death 1 [ Homo sapiens ]

**Official Symbol**                PDCD1

**Synonyms**                      PDCD1; programmed cell death 1; programmed cell death protein 1; CD279; PD1; protein PD-1; PD-1; SLEB2; hPD-1; hPD-I;

**Gene ID**                          5133

**mRNA Refseq**                  NM\_005018

**Protein Refseq**                 NP\_005009

**MIM**                                600244

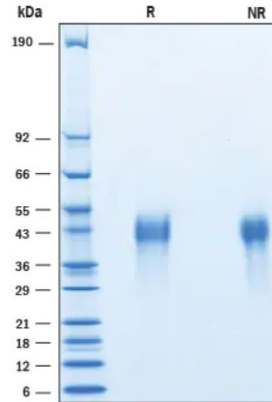
**UniProt ID**                        Q15116

 Tel: 1-631-559-9269    1-516-512-3133

 Email: [info@creative-biomart.com](mailto:info@creative-biomart.com)     Fax: 1-631-938-8127

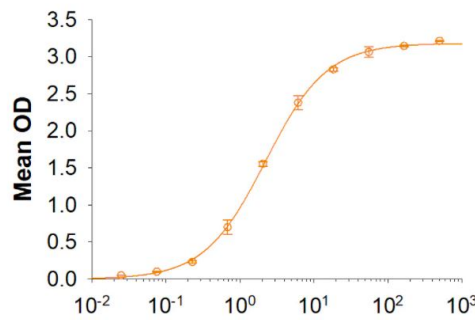
 45-1 Ramsey Road, Shirley, NY 11967, USA


**SDS-PAGE**




2 µg/lane Protein was resolved with SDS-PAGE under reducing (R) and non-reducing (NR) conditions and visualized by Coomassie® Blue staining.

**Binding Activity**

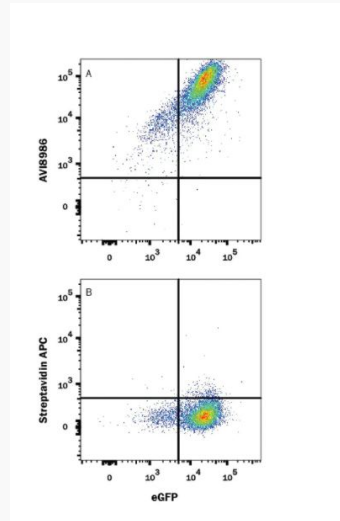


 Tel: 1-631-559-9269 1-516-512-3133

 Email: [info@creative-biomart.com](mailto:info@creative-biomart.com)  Fax: 1-631-938-8127

 45-1 Ramsey Road, Shirley, NY 11967, USA

## Flow Cytometry



In a functional flow cytometry test, (A) Recombinant Human PDCD1 His-tag Avi-tag Protein binds to HEK293 human embryonic kidney cell line transfected with recombinant human PDCDL1 and EGFP. Ligand binding was detected by staining cells with APC-conjugated Streptavidin, which does not stain the cells in the absence of recombinant protein (B).

 Tel: 1-631-559-9269 1-516-512-3133

 Email: [info@creative-biomart.com](mailto:info@creative-biomart.com)  Fax: 1-631-938-8127

 45-1 Ramsey Road, Shirley, NY 11967, USA